

For Research Use Only

# MELK Recombinant antibody, PBS Only (Detector)

Catalog Number: 82893-6-PBS



## Basic Information

<b>Catalog Number:</b> 82893-6-PBS	<b>GenBank Accession Number:</b> BC014039	<b>Purification Method:</b> Protein A purification
<b>Size:</b> 1 mg/ml	<b>GeneID (NCBI):</b> 9833	<b>CloneNo.:</b> 230106E8
<b>Source:</b> Rabbit	<b>UNIPROT ID:</b> Q14680	
<b>Isotype:</b> IgG	<b>Full Name:</b> maternal embryonic leucine zipper kinase	
<b>Immunogen Catalog Number:</b> AG1897	<b>Calculated MW:</b> 651 aa, 75 kDa	

## Applications

**Tested Applications:**  
Sandwich ELISA, Indirect ELISA, Sample test

**Species Specificity:**  
human

## Background Information

### Storage

**Storage:**  
Store at -80°C.  
**The product is shipped with ice packs. Upon receipt, store it immediately at -80°C**

**Storage Buffer:**  
PBS Only

For technical support and original validation data for this product please contact:

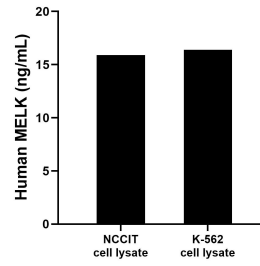
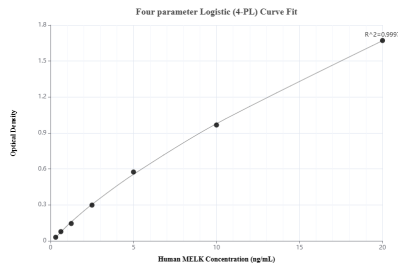
T: 4006900926

E: [Proteintech-CN@ptglab.com](mailto:Proteintech-CN@ptglab.com)

W: [ptgcn.com](http://ptgcn.com)

**This product is exclusively available under Proteintech Group brand and is not available to purchase from any other manufacturer.**

## Selected Validation Data



Sandwich ELISA standard curve of MP00075-4, Human MELK Recombinant Matched Antibody Pair - PBS only. 82893-2-PBS was coated to a plate as the capture antibody and incubated with serial dilutions of standard Ag1897. 82893-6-PBS was HRP conjugated as the detection antibody. Range: 0.313-20 ng/mL

NCCIT and K-562 cell lysate were measured. The human MELK concentration of detected samples was determined to be 15.9 ng/mL (based on a 4.5 mg/mL extract load) in NCCIT cell lysate and 16.4 ng/mL (based on a 4.5 mg/mL extract load) in K-562 cell lysate.