

For Research Use Only

KPNA4 Recombinant antibody, PBS Only



Catalog Number: 82898-2-PBS

Basic Information

Catalog Number: 82898-2-PBS	GenBank Accession Number: BC034493	Purification Method: Protein A purification
Size: 1mg/ml	GeneID (NCBI): 3840	CloneNo.: 230098H1
Source: Rabbit	UNIPROT ID: O00629	
Isotype: IgG	Full Name: karyopherin alpha 4 (importin alpha 3)	
Immunogen Catalog Number: AG3133	Calculated MW: 521 aa, 58 kDa	
	Observed MW: 58 kDa	

Applications

Tested Applications:
WB, IF, Indirect ELISA

Species Specificity:
Human, mouse, rat

Background Information

KPNA4, also named importin subunit alpha-3, karyopherin-alpha4, is a cytoplasmic protein that recognizes nuclear localization signals (NLSs) and dock NLS-containing proteins to the nuclear pore complex. Nuclear import, mediated in part by karyopherin- α (KPNA)/importin- α subtypes, regulates transcription factor access to the genome and determines cell fate. KPNA4-mediated nuclear transport of Ras-responsive element-binding protein (RREB1), which sustains Ras/ERK pathway signaling through repressing miR-143/145 expression (PMID: 31822798). KPNA4 is one of the main isoforms that is activated in many human cancers. KPNA4 expression was elevated in head and neck of squamous cell carcinoma (PMID: 33188837).

Storage

Storage:
Store at -80°C.

Storage Buffer:
PBS Only

For technical support and original validation data for this product please contact:

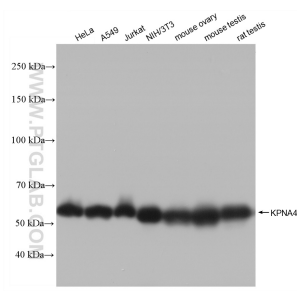
T: 4006900926

E: Proteintech-CN@ptglab.com

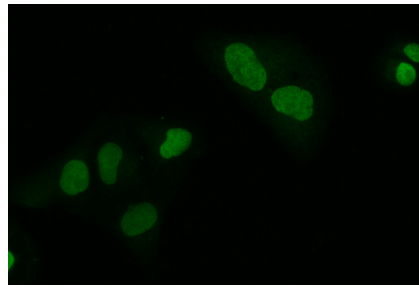
W: ptgcn.com

This product is exclusively available under Proteintech Group brand and is not available to purchase from any other manufacturer.

Selected Validation Data



Various lysates were subjected to SDS PAGE followed by western blot with 82898-2-RR (KPNA4 antibody) at dilution of 1:10000 incubated at room temperature for 1.5 hours. This data was developed using the same antibody clone with 82898-2-PBS in a different storage buffer formulation.



Immunofluorescent analysis of (4% PFA) fixed U2OS cells using KPNA4 antibody (82898-2-RR, Clone: 230098H1) at dilution of 1:200 and CoraLite®488-Conjugated AffiniPure Goat Anti-Rabbit IgG(H+L). This data was developed using the same antibody clone with 82898-2-PBS in a different storage buffer formulation.