

For Research Use Only

Synaptophysin Recombinant antibody, PBS Only



Catalog Number: 82900-1-PBS

Basic Information

Catalog Number: 82900-1-PBS	GenBank Accession Number: BC064550	Purification Method: Protein A purification
Size: 1mg/ml	GeneID (NCBI): 6855	CloneNo.: 2H14
Source: Rabbit	UNIPROT ID: P08247	
Isotype: IgG	Full Name: synaptophysin	
Immunogen Catalog Number: AG11781	Calculated MW: 313 aa, 34 kDa	
	Observed MW: 38-40 kDa	

Applications

Tested Applications:
WB, IP, IF, IHC, Indirect ELISA

Species Specificity:
Human, mouse, rat

Background Information

Synaptophysin (SYP, also known as major synaptic vesicle protein p38) is a 38-kDa integral membrane glycoprotein that regulates synaptic vesicle endocytosis. It is the most abundant synaptic vesicle protein by mass. Synaptophysin is present in neuroendocrine cells and neurons that participate in synaptic transmission. Synaptophysin is a useful marker for identification of neuroendocrine cells and neoplasms. (PMID: 3010302; 21658579)

Storage

Storage:
Store at -80°C.

Storage Buffer:
PBS Only

For technical support and original validation data for this product please contact:

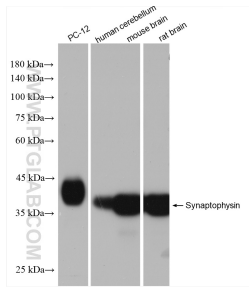
T: 4006900926

E: Proteintech-CN@ptglab.com

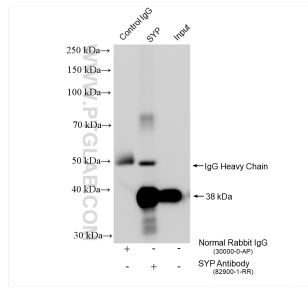
W: ptgcn.com

This product is exclusively available under Proteintech Group brand and is not available to purchase from any other manufacturer.

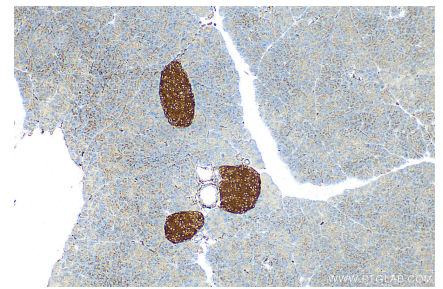
Selected Validation Data



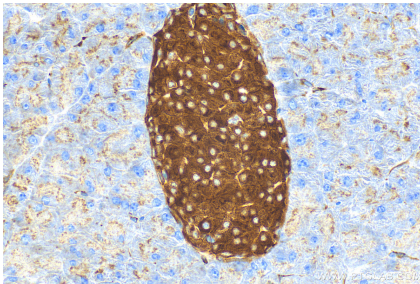
Various lysates were subjected to SDS PAGE followed by western blot with 82900-1-RR (Synaptophysin antibody) at dilution of 1:20000 incubated at room temperature for 1.5 hours. This data was developed using the same antibody clone with 82900-1-PBS in a different storage buffer formulation.



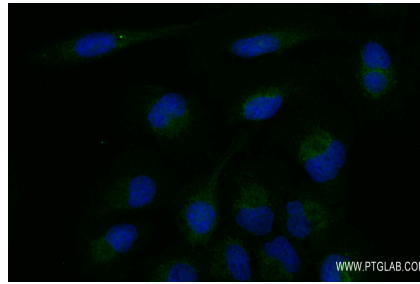
IP result of anti-Synaptophysin (IP:82900-1-RR, 4ug; Detection:82900-1-RR 1:5000) with mouse brain tissue lysate 1800 ug. This data was developed using the same antibody clone with 82900-1-PBS in a different storage buffer formulation.



Immunohistochemical analysis of paraffin-embedded mouse pancreas tissue slide using 82900-1-RR (Synaptophysin antibody) at dilution of 1:1000 (under 10x lens). Heat mediated antigen retrieval with Tris-EDTA buffer (pH 9.0). This data was developed using the same antibody clone with 82900-1-PBS in a different storage buffer formulation.



Immunohistochemical analysis of paraffin-embedded mouse pancreas tissue slide using 82900-1-RR (Synaptophysin antibody) at dilution of 1:1000 (under 40x lens). Heat mediated antigen retrieval with Tris-EDTA buffer (pH 9.0). This data was developed using the same antibody clone with 82900-1-PBS in a different storage buffer formulation.



Immunofluorescent analysis of (-20°C Ethanol) fixed U2OS cells using Synaptophysin antibody (82900-1-RR, Clone: 2H14) at dilution of 1:400 and CoraLite®488-Conjugated AffiniPure Goat Anti-Rabbit IgG(H+L). This data was developed using the same antibody clone with 82900-1-PBS in a different storage buffer formulation.