

For Research Use Only

# c-Met (Cytoplasmic) Recombinant antibody, PBS Only



Catalog Number: 82904-1-PBS

## Basic Information

<b>Catalog Number:</b> 82904-1-PBS	<b>GenBank Accession Number:</b> BC130420	<b>Purification Method:</b> Protein A purification
<b>Size:</b> 1mg/ml	<b>GeneID (NCBI):</b> 4233	<b>CloneNo.:</b> 2G12
<b>Source:</b> Rabbit	<b>UNIPROT ID:</b> P08581	
<b>Isotype:</b> IgG	<b>Full Name:</b> met proto-oncogene (hepatocyte growth factor receptor)	
<b>Immunogen Catalog Number:</b> AG23140	<b>Calculated MW:</b> 1390 aa, 155 kDa	
	<b>Observed MW:</b> 140 kDa	

## Applications

**Tested Applications:**  
WB, Indirect ELISA

**Species Specificity:**  
Human, mouse, rat

## Background Information

c-Met (also named MET or HGFR) is a receptor tyrosine kinase that transduces signals from the extracellular matrix into the cytoplasm by binding to the HGF ligand. c-Met regulates many physiological processes including proliferation, scattering, morphogenesis, and survival. The primary single-chain precursor protein is post-translationally cleaved to produce the alpha and beta subunits, which are disulfide-linked to form the mature receptor. Overexpression and/or mutation of c-Met has been reported in various human malignancies, including lung cancer, breast cancer, head and neck cancer, gastric cancer, colorectal cancer, bladder cancer, uterine cervix carcinoma, esophageal carcinoma, c-Met could serve as an important therapeutic target (PMID: 26036285). The c-met receptor is a 190-kD glycoprotein consisting of a 145-kD membrane-spanning beta chain and a 50-kD alpha chain (PMID: 7806559). In Western blot, this antibody produces bands of unknown identity at 55 and 100 kDa.

## Storage

**Storage:**  
Store at -80°C.

**Storage Buffer:**  
PBS Only

For technical support and original validation data for this product please contact:

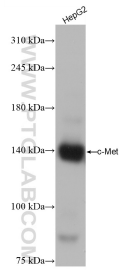
T: 4006900926

E: [Proteintech-CN@ptglab.com](mailto:Proteintech-CN@ptglab.com)

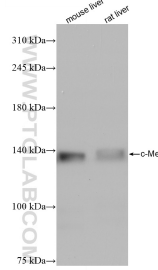
W: [ptgcn.com](http://ptgcn.com)

**This product is exclusively available under Proteintech Group brand and is not available to purchase from any other manufacturer.**

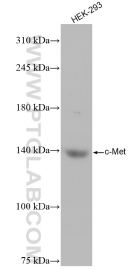
## Selected Validation Data



HepG2 cells were subjected to SDS PAGE followed by western blot with 82904-1-RR (c-Met antibody) at dilution of 1:5000 incubated at room temperature for 1.5 hours. This data was developed using the same antibody clone with 82904-1-PBS in a different storage buffer formulation.



Various lysates were subjected to SDS PAGE followed by western blot with 82904-1-RR (c-Met antibody) at dilution of 1:5000 incubated at room temperature for 1.5 hours. This data was developed using the same antibody clone with 82904-1-PBS in a different storage buffer formulation.



HEK-293 cells were subjected to SDS PAGE followed by western blot with 82904-1-RR (c-Met antibody) at dilution of 1:5000 incubated at room temperature for 1.5 hours. This data was developed using the same antibody clone with 82904-1-PBS in a different storage buffer formulation.