

For Research Use Only

# ALPL Recombinant antibody, PBS Only



Catalog Number: 82915-1-PBS

## Basic Information

<b>Catalog Number:</b> 82915-1-PBS	<b>GenBank Accession Number:</b> BC021289	<b>Purification Method:</b> Protein A purification
<b>Size:</b> 1 mg/ml	<b>GeneID (NCBI):</b> 249	<b>CloneNo.:</b> 230212B10
<b>Source:</b> Rabbit	<b>UNIPROT ID:</b> P05186	
<b>Isotype:</b> IgG	<b>Full Name:</b> alkaline phosphatase, liver/bone/kidney	
<b>Immunogen Catalog Number:</b> AG1664	<b>Calculated MW:</b> 57 kDa	

## Applications

**Tested Applications:**  
FC, Indirect ELISA

**Species Specificity:**  
Human

## Background Information

### Storage

**Storage:**  
Store at -80°C.

**Storage Buffer:**  
PBS Only

For technical support and original validation data for this product please contact:

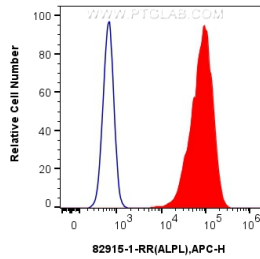
T: 4006900926

E: [Proteintech-CN@ptglab.com](mailto:Proteintech-CN@ptglab.com)

W: [ptgcn.com](http://ptgcn.com)

This product is exclusively available under Proteintech Group brand and is not available to purchase from any other manufacturer.

## Selected Validation Data



1x10<sup>6</sup> HeLa cells were intracellularly stained with 0.25 ug Anti-Human ALPL (82915-1-RR, Clone:230212B10) and APC-Conjugated AffiniPure Goat Anti-Rabbit IgG(H+L) at dilution 1:166 (red), or 0.25 ug Rabbit IgG control Rabbit PolyAb (30000-0-AP, Clone: ) (blue). Cells were fixed with 4% PFA and permeabilized with Flow Cytometry Perm Buffer (PF00011-C). This data was developed using the same antibody clone with 82915-1-PBS in a different storage buffer formulation.

