

For Research Use Only

# PICK1 Recombinant antibody, PBS Only (Detector)



Catalog Number: 82919-1-PBS

## Basic Information

<b>Catalog Number:</b> 82919-1-PBS	<b>GenBank Accession Number:</b> BC017561	<b>Purification Method:</b> Protein A purification
<b>Size:</b> 1mg/ml	<b>GeneID (NCBI):</b> 9463	<b>CloneNo.:</b> 230185B8
<b>Source:</b> Rabbit	<b>UNIPROT ID:</b> Q9NRD5	
<b>Isotype:</b> IgG	<b>Full Name:</b> protein interacting with PRKCA 1	
<b>Immunogen Catalog Number:</b> AG1443	<b>Calculated MW:</b> 47 kDa	
	<b>Observed MW:</b> 50 kDa	

## Applications

**Tested Applications:**  
Indirect ELISA, Cytometric bead array, WB

**Species Specificity:**  
pig, rat, mouse, human

## Background Information

Protein interacting with C kinase 1 (PICK1) was first cloned as a PKC-binding partner through yeast two hybrid system. PICK1 acts as a critical regulator of membrane receptors' subcellular trafficking to modulate neural processes such as learning and memory, and is widely expressed in brain, testis, heart, lung, liver, kidney and muscle. It probably binds to and organize the subcellular localization of a variety of membrane proteins containing some PDZ recognition sequence, for instance, PICK1 is a critical mediator of  $\alpha$ -amino-3-hydroxy-5-methyl-4-isoxazolepropionic acid receptor (AMPA) trafficking in neural synapses. PICK1 expression on D-serine release and glutamate transport in astrocytes suggests a potential implication of PICK1 in the progression of amyotrophic lateral sclerosis (ALS). PICK1 may also participate in breast cancer development through inhibition of TGF- $\beta$  signaling.

## Storage

**Storage:**  
Store at -80°C.  
**The product is shipped with ice packs. Upon receipt, store it immediately at -80°C**

**Storage Buffer:**  
100% PBS pH 7.3

For technical support and original validation data for this product please contact:

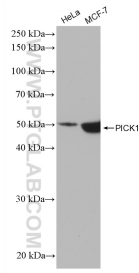
T: 4006900926

E: [Proteintech-CN@ptglab.com](mailto:Proteintech-CN@ptglab.com)

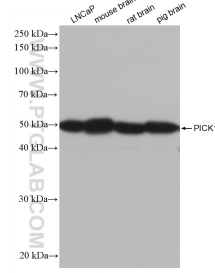
W: [ptgcn.com](http://ptgcn.com)

**This product is exclusively available under Proteintech Group brand and is not available to purchase from any other manufacturer.**

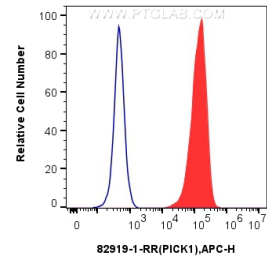
## Selected Validation Data



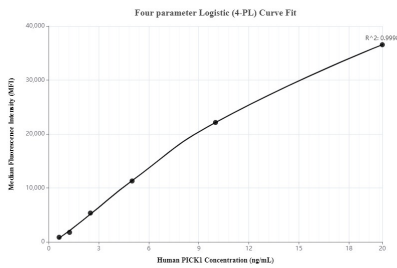
Various lysates were subjected to SDS PAGE followed by western blot with 82919-1-RR (PICK1 antibody) at dilution of 1:4000 incubated at room temperature for 1.5 hours. This data was developed using the same antibody clone with 82919-1-PBS in a different storage buffer formulation.



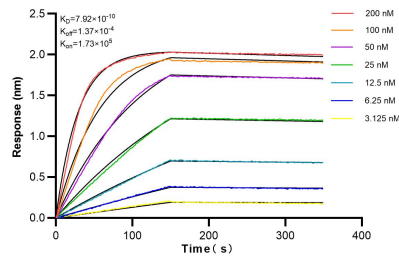
Various lysates were subjected to SDS PAGE followed by western blot with 82919-1-RR (PICK1 antibody) at dilution of 1:4000 incubated at room temperature for 1.5 hours. This data was developed using the same antibody clone with 82919-1-PBS in a different storage buffer formulation.



$1 \times 10^6$  HEK-293T cells were intracellularly stained with 0.25  $\mu$ g Anti-Human PICK1 (82919-1-RR, Clone:230185B8) and APC-Conjugated AffiniPure Goat Anti-Rabbit IgG(H+L) at dilution 1:166 (red), or 0.25  $\mu$ g Rabbit IgG control Rabbit PolyAb (30000-O-AP, Clone: ). Cells were fixed with 4% PFA and permeabilized with Flow Cytometry Perm Buffer (PF00011-C). This data was developed using the same antibody clone with 82919-1-PBS in a different storage buffer formulation.



Cytometric bead array standard curve of mP00068-2, PICK1 Recombinant Matched Antibody Pair, PBS Only. Capture antibody: 82919-3-PBS. Detection antibody: 82919-1-PBS. Standard: Ag1443. Range: 0.625-20 ng/mL



Biolayer interferometry (BLI) kinetic assays of 82919-1-RR against Human PICK1 were performed. The affinity constant is 0.792 nM.