

For Research Use Only

HLA-DMB Recombinant antibody, PBS Only



Catalog Number: 82922-1-PBS

Basic Information

Catalog Number:

82922-1-PBS

Size:

1 mg/ml

Source:

Rabbit

Isotype:

IgG

Immunogen Catalog Number:

AG16320

GenBank Accession Number:

BC027175

GeneID (NCBI):

3109

UNIPROT ID:

P28068

Full Name:

major histocompatibility complex,
class II, DM beta

Calculated MW:

263 aa, 29 kDa

Observed MW:

31 kDa

Purification Method:

Protein A purification

CloneNo.:

230123A3

Applications

Tested Applications:

WB, Indirect ELISA

Species Specificity:

Human

Background Information

Human major histocompatibility complex (MHC) antigens, also referred to as human leukocyte antigens (HLA), are encoded by genes located on the short arm of chromosome 6 (6p21.3). There are two classes of HLA antigens: class I (HLA-A, B and C) and class II (HLA-D). The class II molecules are composed of two non-covalently associated alpha and beta chains. HLA-DMA and HLA-DMB form a functional heterodimer that is critical in the pathway of class II antigen presentation. HLA-DM plays a critical role in catalyzing the release of Class II HLA-associated invariant chain-derived peptides (CLIP) from newly synthesized class II HLA molecules and freeing the peptide binding site for acquisition of antigenic peptides.

Storage

Storage:

Store at -80°C.

Storage Buffer:

PBS Only

For technical support and original validation data for this product please contact:

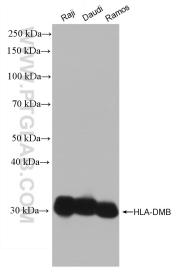
T: 4006900926

E: Proteintech-CN@ptglab.com

W: ptgcn.com

This product is exclusively available under Proteintech Group brand and is not available to purchase from any other manufacturer.

Selected Validation Data



Various lysates were subjected to SDS PAGE followed by western blot with 82922-1-RR (HLA-DMB antibody) at dilution of 1:5000 incubated at room temperature for 1.5 hours. This data was developed using the same antibody clone with 82922-1-PBS in a different storage buffer formulation.