

# HLA-DMB Recombinant antibody

Catalog Number: 82922-1-RR

## Basic Information

**Catalog Number:**

82922-1-RR

**Size:**

1000 µg/ml

**Source:**

Rabbit

**Isotype:**

IgG

**Immunogen Catalog Number:**

AG16320

**GenBank Accession Number:**

BC027175

**GeneID (NCBI):**

3109

**UNIPROT ID:**

P28068

**Full Name:**major histocompatibility complex,  
class II, DM beta**Calculated MW:**

263 aa, 29 kDa

**Observed MW:**

31 kDa

**Purification Method:**

Protein A purification

**CloneNo.:**

230123A3

**Recommended Dilutions:**

WB 1:2000-1:10000

IF 1:200-1:800

## Applications

**Tested Applications:**

WB, IF/ICC, ELISA

**Species Specificity:**

Human

**Positive Controls:**

WB : Raji cells, Daudi cells, Ramos cells

IF : Raji cells,

## Background Information

Human major histocompatibility complex (MHC) antigens, also referred to as human leukocyte antigens (HLA), are encoded by genes located on the short arm of chromosome 6 (6p21.3). There are two classes of HLA antigens: class I (HLA-A, B and C) and class II (HLA-D). The class II molecules are composed of two non-covalently associated alpha and beta chains. HLA-DMA and HLA-DMB form a functional heterodimer that is critical in the pathway of class II antigen presentation. HLA-DM plays a critical role in catalyzing the release of Class II HLA-associated invariant chain-derived peptides (CLIP) from newly synthesized class II HLA molecules and freeing the peptide binding site for acquisition of antigenic peptides.

## Storage

**Storage:**

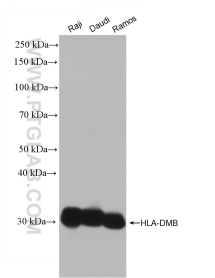
Store at -20°C. Stable for one year after shipment.

**Storage Buffer:**

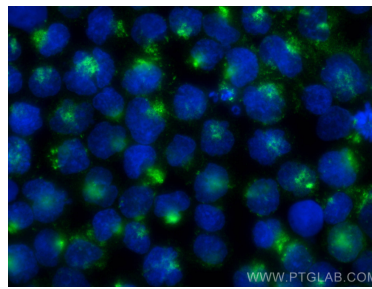
PBS with 0.02% sodium azide and 50% glycerol pH 7.3.

Aliquoting is unnecessary for -20°C storage

## Selected Validation Data



Various lysates were subjected to SDS PAGE followed by western blot with 82922-1-RR (HLA-DMB antibody) at dilution of 1:5000 incubated at room temperature for 1.5 hours.



Immunofluorescent analysis of (4% PFA) fixed Raji cells using HLA-DMB antibody (82922-1-RR, Clone: 230123A3 ) at dilution of 1:400 and CoraLite® 488-Conjugated AffiniPure Goat Anti-Rabbit IgG(H+L).