

For Research Use Only

CUX2 Recombinant antibody, PBS Only



Catalog Number: 82933-1-PBS

Basic Information

Catalog Number: 82933-1-PBS	GenBank Accession Number: BC151245	Purification Method: Protein A purification
Size: 1mg/ml	GeneID (NCBI): 23316	CloneNo.: 230235G1
Source: Rabbit	UNIPROT ID: O14529	
Isotype: IgG	Full Name: cut-like homeobox 2	
Immunogen Catalog Number: AG18809	Calculated MW: 1486 aa, 162 kDa	
	Observed MW: 162 kDa	

Applications

Tested Applications:
WB, IF, Indirect ELISA

Species Specificity:
Human

Background Information

Cut like homeobox 2 (CUX2) also named as, CDP2 or CUTL2, is a 1486 amino acid protein, which contains one homeobox DNA-binding domain and three CUT DNA-binding domains. CUX2 localizes in the nucleus and belongs to the CUT homeobox family. CUX2 may as a transcription factor be involved in neural specification.

Storage

Storage:
Store at -80°C.
The product is shipped with ice packs. Upon receipt, store it immediately at -80°C

Storage Buffer:
PBS Only

For technical support and original validation data for this product please contact:

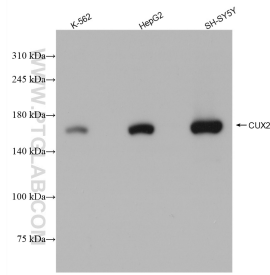
T: 4006900926

E: Proteintech-CN@ptglab.com

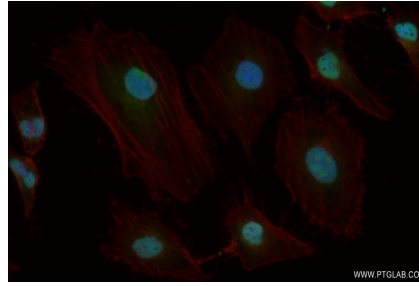
W: ptgcn.com

This product is exclusively available under Proteintech Group brand and is not available to purchase from any other manufacturer.

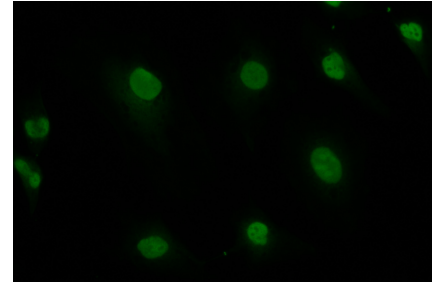
Selected Validation Data



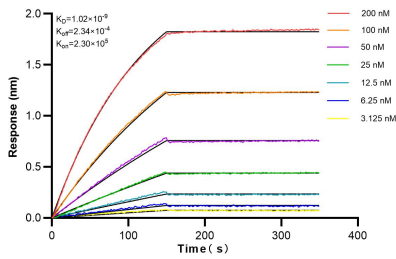
Various lysates were subjected to SDS PAGE followed by western blot with 82933-1-RR (CUX2 antibody) at dilution of 1:5000 incubated at room temperature for 1.5 hours. This data was developed using the same antibody clone with 82933-1-PBS in a different storage buffer formulation.



Immunofluorescent analysis of (4% PFA) fixed HeLa cells using CUX2 antibody (82933-1-RR, Clone: 230235G1) at dilution of 1:300 and CoraLite®488-Conjugated AffiniPure Goat Anti-Rabbit IgG(H+L). This data was developed using the same antibody clone with 82933-1-PBS in a different storage buffer formulation.



Immunofluorescent analysis of (4% PFA) fixed HeLa cells using CUX2 antibody (82933-1-RR, Clone: 230235G1) at dilution of 1:300 and CoraLite®488-Conjugated AffiniPure Goat Anti-Rabbit IgG(H+L). This data was developed using the same antibody clone with 82933-1-PBS in a different storage buffer formulation.



Bi-layer interferometry (BLI) kinetic assays of 82933-1-RR against Human CUX2 were performed. The affinity constant is 1.02 nM.