

For Research Use Only

CUX2 Recombinant antibody

Catalog Number: 82933-1-RR

Featured Product



Basic Information

Catalog Number: 82933-1-RR	GenBank Accession Number: BC151245	Purification Method: Protein A purification
Size: 1000 ug/ml	GeneID (NCBI): 23316	CloneNo.: 230235G1
Source: Rabbit	UNIPROT ID: O14529	Recommended Dilutions: WB 1:2000-1:10000 IF/ICC 1:150-1:600
Isotype: IgG	Full Name: cut-like homeobox 2	
Immunogen Catalog Number: AG18809	Calculated MW: 1486 aa, 162 kDa	
	Observed MW: 162 kDa	

Applications

Tested Applications: WB, IF/ICC, ELISA	Positive Controls:
Species Specificity: human	WB : K-562 cells, SH-SY5Y cells, HepG2 cells IF/ICC : HeLa cells,

Background Information

Cut like homeobox 2 (CUX2) also named as, CDP2 or CUTL2, is a 1486 amino acid protein, which contains one homeobox DNA-binding domain and three CUT DNA-binding domains. CUX2 localizes in the nucleus and belongs to the CUT homeobox family. CUX2 may as a transcription factor be involved in neural specification.

Storage

Storage:
Store at -20°C. Stable for one year after shipment.
Storage Buffer:
PBS with 0.02% sodium azide and 50% glycerol pH 7.3.
Aliquoting is unnecessary for -20°C storage

For technical support and original validation data for this product please contact:

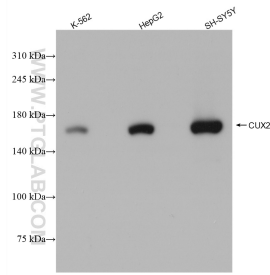
T: 4006900926

E: Proteintech-CN@ptglab.com

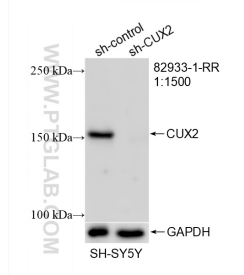
W: ptgcn.com

This product is exclusively available under Proteintech Group brand and is not available to purchase from any other manufacturer.

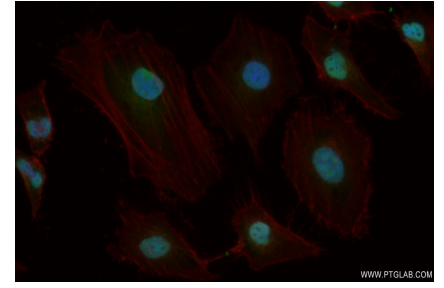
Selected Validation Data



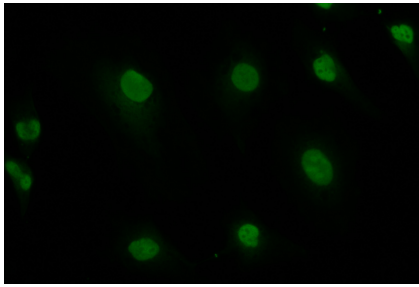
Various lysates were subjected to SDS PAGE followed by western blot with 82933-1-RR (CUX2 antibody) at dilution of 1:5000 incubated at room temperature for 1.5 hours.



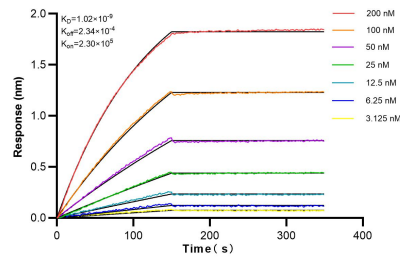
WB result of CUX2 antibody (82933-1-RR; 1:1500; incubated at room temperature for 1.5 hours) with sh-Control and sh-CUX2 transfected SH-SY5Y cells.



Immunofluorescent analysis of (4% PFA) fixed HeLa cells using CUX2 antibody (82933-1-RR, Clone: 230235G1) at dilution of 1:300 and CoraLite®488-Conjugated AffiniPure Goat Anti-Rabbit IgG(H+L).



Immunofluorescent analysis of (4% PFA) fixed HeLa cells using CUX2 antibody (82933-1-RR, Clone: 230235G1) at dilution of 1:300 and CoraLite®488-Conjugated AffiniPure Goat Anti-Rabbit IgG(H+L).



Biolayer interferometry (BLI) kinetic assays of 82933-1-RR against Human CUX2 were performed. The affinity constant is 1.02 nM.