

For Research Use Only

# PAK7 Recombinant antibody, PBS Only (Detector)



Catalog Number: 82935-4-PBS

## Basic Information

<b>Catalog Number:</b> 82935-4-PBS	<b>GenBank Accession Number:</b> BC024179	<b>Purification Method:</b> Protein A purification
<b>Size:</b> 1mg/ml	<b>GeneID (NCBI):</b> 57144	<b>CloneNo.:</b> 230201B1
<b>Source:</b> Rabbit	<b>UNIPROT ID:</b> Q9P286	
<b>Isotype:</b> IgG	<b>Full Name:</b> p21 protein (Cdc42/Rac)-activated kinase 7	
<b>Immunogen Catalog Number:</b> AG29190	<b>Calculated MW:</b> 719 aa, 81 kDa	

## Applications

**Tested Applications:**  
Indirect ELISA, Cytometric bead array

**Species Specificity:**  
Human

## Background Information

### Storage

**Storage:**  
Store at -80°C.

**Storage Buffer:**  
100% PBS pH 7.3

For technical support and original validation data for this product please contact:

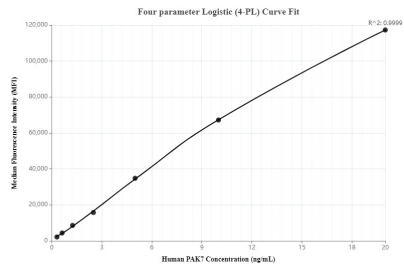
T: 4006900926

E: [Proteintech-CN@ptglab.com](mailto:Proteintech-CN@ptglab.com)

W: [ptgcn.com](http://ptgcn.com)

This product is exclusively available under Proteintech Group brand and is not available to purchase from any other manufacturer.

## Selected Validation Data



Cytometric bead array standard curve of MP00086-1, PAK7 Recombinant Matched Antibody Pair, PBS Only. Capture antibody: 82935-2-PBS. Detection antibody: 82935-4-PBS. Standard: Ag29190. Range: 0.313-20 ng/mL