

For Research Use Only

EIF2S1 Recombinant antibody

Catalog Number: 82936-8-RR



Basic Information

Catalog Number: 82936-8-RR	GenBank Accession Number: BC002513	Purification Method: Protein A purification
Size: 1000 µg/ml	GeneID (NCBI): 1965	CloneNo.: 230245B8
Source: Rabbit	UNIPROT ID: P05198	Recommended Dilutions: WB 1:2000-1:10000 IF 1:150-1:600
Isotype: IgG	Full Name: eukaryotic translation initiation factor 2, subunit 1 alpha, 35kDa	
Immunogen Catalog Number: AG1645	Calculated MW: 36 kDa	
	Observed MW: 36 kDa	

Applications

Tested Applications: WB, IF/ICC, FC, ELISA	Positive Controls: WB : NIH/3T3 cells, HepG2 cells, MCF-7 cells, RAW 264.7 cells IF : HeLa cells,
Species Specificity: Human, Mouse	

Background Information

EIF2S1 is one subunit of the translation initiation factor EIF2, which catalyzes the first regulated step of protein synthesis initiation, promoting the binding of the initiator tRNA to 40S ribosomal subunits. This complex binds to a 40S ribosomal subunit, followed by mRNA binding to form a 43S preinitiation complex. Junction of the 60S ribosomal subunit to form the 80S initiation complex is preceded by hydrolysis of the GTP bound to eIF-2 and release of an eIF-2-GDP binary complex. In order for eIF-2 to recycle and catalyze another round of initiation, the GDP bound to eIF-2 must exchange with GTP by way of a reaction catalyzed by eIF-2B. EIF2A (Gene ID: 83939) and EIF2S1 (Gene ID: 1965) share the EIF2A symbol/alias in common. EIF2S1 is the alpha subunit of the eIF2 translation initiation complex. Although both of these proteins function in binding initiator tRNA to the 40S ribosomal subunit, the EIF2A protein does so in a codon-dependent manner, whereas eIF2 complex requires GTP.

Storage

Storage:
Store at -20°C. Stable for one year after shipment.
Storage Buffer:
PBS with 0.02% sodium azide and 50% glycerol pH 7.3.
Aliquoting is unnecessary for -20°C storage

For technical support and original validation data for this product please contact:

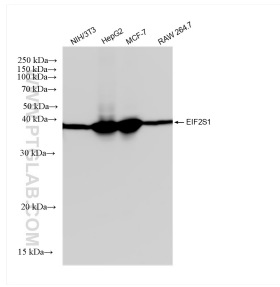
T: 4006900926

E: Proteintech-CN@ptglab.com

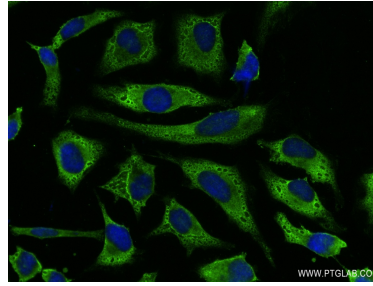
W: ptgcn.com

This product is exclusively available under Proteintech Group brand and is not available to purchase from any other manufacturer.

Selected Validation Data



Various lysates were subjected to SDS PAGE followed by western blot with 82936-8-RR (EIF2S1 antibody) at dilution of 1:5000 incubated at room temperature for 1.5 hours.



Immunofluorescent analysis of (-20°C Ethanol) fixed HeLa cells using EIF2S1 antibody (82936-8-RR, Clone: 230245B8) at dilution of 1:300 and CoraLite® 488-Conjugated AffiniPure Goat Anti-Rabbit IgG(H+L) (SA00013-2).

1x10⁶ HeLa cells were intracellularly stained with 0.25 ug EIF2S1 Recombinant antibody (82936-8-RR, Clone:230245B8) and CoraLite® 488-Conjugated AffiniPure Goat Anti-Rabbit IgG(H+L) (SA00013-2) (red), or 0.25 ug Isotype Control (blue). Cells were fixed with 4% PFA and permeabilized with Flow Cytometry Perm Buffer (PF00011-C).