

For Research Use Only

# CAMP Recombinant antibody

Catalog Number:82940-2-RR



## Basic Information

|  |   |   |
|--|---|---|
| <b>Catalog Number:</b><br>82940-2-RR       | <b>GenBank Accession Number:</b><br>BC055089            | <b>Purification Method:</b><br>Protein A purification |
| <b>Size:</b><br>1000 ug/ml                 | <b>GeneID (NCBI):</b><br>820                            | <b>CloneNo.:</b><br>230157C6                          |
| <b>Source:</b><br>Rabbit                   | <b>UNIPROT ID:</b><br>P49913                            |   |
| <b>Isotype:</b><br>IgG                     | <b>Full Name:</b><br>cathelicidin antimicrobial peptide |   |
| <b>Immunogen Catalog Number:</b><br>AG2622 | <b>Calculated MW:</b><br>170 aa, 19 kDa                 |   |

## Applications

**Tested Applications:**  
FC (Intra), ELISA

**Species Specificity:**  
human

## Background Information

CAMP is a member of an antimicrobial peptide family, characterized by a highly conserved N-terminal signal peptide containing a cathelin domain and a structurally variable cationic antimicrobial peptide, which is produced by extracellular proteolysis from the C-terminus. In addition to its antibacterial, antifungal, and antiviral activities, the encoded protein functions in cell chemotaxis, immune mediator induction, and inflammatory response regulation. CAMP encodes the 18-kDa proprotein hCAP18. FALL-39 and LL-37 are the mature cathelicidin peptides. This antibody can recognize all the proprotein and cleaved species.

## Storage

**Storage:**  
Store at -20°C. Stable for one year after shipment.

**Storage Buffer:**  
PBS with 0.02% sodium azide and 50% glycerol pH 7.3.

**Aliquoting is unnecessary for -20°C storage**

For technical support and original validation data for this product please contact:

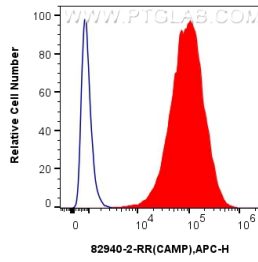
T: 4006900926

E: [Proteintech-CN@ptglab.com](mailto:Proteintech-CN@ptglab.com)

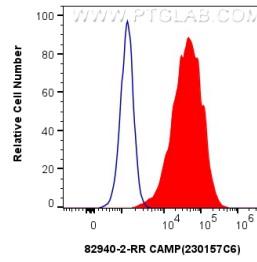
W: [ptgcn.com](http://ptgcn.com)

**This product is exclusively available under Proteintech Group brand and is not available to purchase from any other manufacturer.**

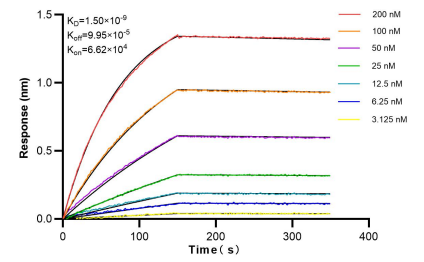
## Selected Validation Data



$1 \times 10^6$  MCF-7 cells were intracellularly stained with 0.25  $\mu$ g Anti-Human CAMP (82940-2-RR, Clone:230157C6) and APC-Conjugated AffiniPure Goat Anti-Rabbit IgG(H+L) at dilution 1:1000(red), or 0.25  $\mu$ g Rabbit IgG control Rabbit PolyAb (30000-O-AP) (blue). Cells were fixed with 4% PFA and permeabilized with Flow Cytometry Perm Buffer (PF00011-C).



(blue)  $1 \times 10^6$  HeLa cells were intracellularly stained with 0.25  $\mu$ g Anti-Human CAMP (82940-2-RR, Clone:230157C6) and APC-Conjugated AffiniPure Goat Anti-Rabbit IgG(H+L) at dilution (red), or 0.25  $\mu$ g Isotype Control. Cells were fixed with 4% PFA and permeabilized with Flow Cytometry Perm Buffer (PF00011-C).



Biolayer interferometry (BLI) kinetic assays of 82940-2-RR against Human CAMP were performed. The affinity constant is 1.50 nM.