

For Research Use Only

LAMB2 Recombinant antibody

Catalog Number: 82946-1-RR



Basic Information

Catalog Number: 82946-1-RR	GenBank Accession Number: NM_002292.3	Purification Method: Protein A purification
Size: 1000 ug/ml	GeneID (NCBI): 3913	CloneNo.: 230143E4
Source: Rabbit	UNIPROT ID: P55268	Recommended Dilutions: WB 1:5000-1:50000 IHC 1:500-1:2000
Isotype: IgG	Full Name: laminin, beta 2 (laminin 5)	
Immunogen Catalog Number: AG33468	Calculated MW: 196 kDa	
	Observed MW: 195-200 kDa	

Applications

Tested Applications:
WB, IHC, FC (Intra), ELISA

Species Specificity:
human

Note-IHC: suggested antigen retrieval with TE buffer pH 9.0; (*) Alternatively, antigen retrieval may be performed with citrate buffer pH 6.0

Positive Controls:

WB : HeLa cells, HepG2 cells, HEK-293 cells

IHC : human stomach cancer tissue,

Background Information

LAMB2 (laminin subunit beta 2), also known as LAMS. Laminins, a family of extracellular matrix glycoproteins, are the major noncollagenous constituent of basement membranes. They have been implicated in a wide variety of biological processes including cell adhesion, differentiation, migration, signaling, neurite outgrowth and metastasis. Laminins, composed of 3 non identical chains: laminin alpha, beta and gamma (formerly A, B1, and B2, respectively), form a cruciform structure consisting of 3 short arms, each formed by a different chain, and a long arm composed of all 3 chains. This gene encodes the beta chain isoform laminin, beta 2. It is enriched in the basement membrane of muscles at the neuromuscular junctions, kidney glomerulus and vascular smooth muscle. Transgenic mice in which the beta 2 chain gene was inactivated by homologous recombination, showed defects in the maturation of neuromuscular junctions and impairment of glomerular filtration. The calculated molecular weight of LAMB2 is 200 kDa.

Storage

Storage:
Store at -20°C. Stable for one year after shipment.
Storage Buffer:
PBS with 0.02% sodium azide and 50% glycerol pH 7.3.
Aliquoting is unnecessary for -20°C storage

For technical support and original validation data for this product please contact:

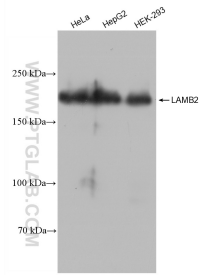
T: 4006900926

E: Proteintech-CN@ptglab.com

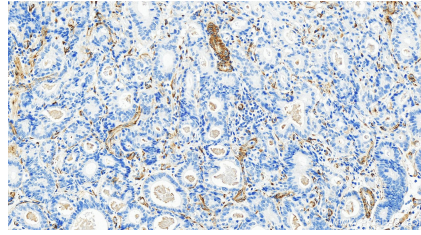
W: ptgcn.com

This product is exclusively available under Proteintech Group brand and is not available to purchase from any other manufacturer.

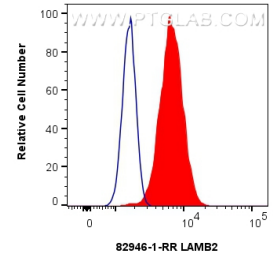
Selected Validation Data



Various lysates were subjected to SDS PAGE followed by western blot with 82946-1-RR (LAMB2 antibody) at dilution of 1:10000 incubated at room temperature for 1.5 hours.



Immunohistochemical analysis of paraffin-embedded human stomach cancer tissue slide using 82946-1-RR (LAMB2 antibody) at dilution of 1:1000 (under 20x lens). Heat mediated antigen retrieval with Tris-EDTA buffer(pH9).



1×10^6 HepG2 cells were intracellularly stained with 0.4 ug LAMB2 Recombinant antibody (82946-1-RR, Clone:230143E4) and CoraLite®488-Conjugated AffiniPure Goat Anti-Rabbit IgG(H+L) (SA00013-2)(red), or 0.4 ug Isotype Control (blue). Cells were fixed with 4% PFA and permeabilized with Flow Cytometry Perm Buffer (PF00011-C).