

For Research Use Only

# MAP3K7IP2 Recombinant antibody, PBS Only (Detector)



Catalog Number: 82948-1-PBS

## Basic Information

<b>Catalog Number:</b> 82948-1-PBS	<b>GenBank Accession Number:</b> BC035910	<b>Purification Method:</b> Protein A purification
<b>Size:</b> 1mg/ml	<b>GeneID (NCBI):</b> 23118	<b>CloneNo.:</b> 230118G2
<b>Source:</b> Rabbit	<b>UNIPROT ID:</b> Q9NYJ8	
<b>Isotype:</b> IgG	<b>Full Name:</b> mitogen-activated protein kinase kinase kinase 7 interacting protein 2	
<b>Immunogen Catalog Number:</b> AG5742	<b>Calculated MW:</b> 76 kDa	
	<b>Observed MW:</b> 77 kDa	

## Applications

**Tested Applications:**  
Cytometric bead array, Indirect ELISA, WB

**Species Specificity:**  
mouse, human

## Background Information

Tab2 has a role in the inflammatory signal transduction pathway and is involved in the reversal of NCoR-dependent and NFkB- or APP-mediated gene repression and androgen antagonist response. Besides, it is identified as a cofactor for ERBB4 to assemble NCoR corepressor complex in response to neuregulin [PMID:16469706]. It also functions as an adaptor that links TAK1 and TRAF6 in response to interleukin-1 $\beta$  (IL-1 $\beta$ ) or tumour necrosis factor- $\alpha$  (TNF- $\alpha$ ), and thereby mediates TAK1 activation [PMID:11460167].

## Storage

**Storage:**  
Store at -80°C.  
**The product is shipped with ice packs. Upon receipt, store it immediately at -80°C**

**Storage Buffer:**  
100% PBS pH 7.3

For technical support and original validation data for this product please contact:

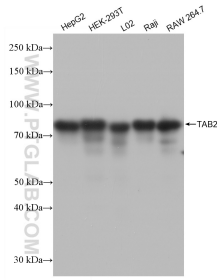
T: 4006900926

E: [Proteintech-CN@ptglab.com](mailto:Proteintech-CN@ptglab.com)

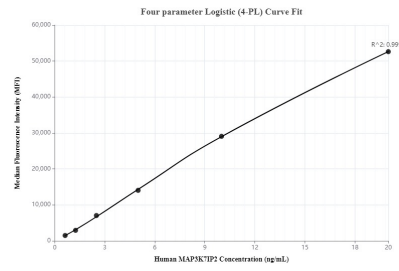
W: [ptgcn.com](http://ptgcn.com)

**This product is exclusively available under Proteintech Group brand and is not available to purchase from any other manufacturer.**

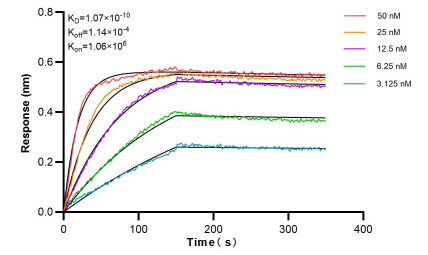
## Selected Validation Data



Various lysates were subjected to SDS PAGE followed by western blot with 82948-1-RR (MAP3K7IP2 antibody) at dilution of 1:3000 incubated at room temperature for 1.5 hours. This data was developed using the same antibody clone with 82948-1-PBS in a different storage buffer formulation.



Cytometric bead array standard curve of MP00082-3, TAB2 Recombinant Matched Antibody Pair, PBS Only. Capture antibody: 82948-3-PBS. Detection antibody: 82948-1-PBS. Standard: Ag5742. Range: 0.625-20 ng/mL.



Bi-layer interferometry (BLI) kinetic assays of 82948-1-RR against Human TAB2 were performed. The affinity constant is 0.107 nM.