

For Research Use Only

# CPO Recombinant antibody

Catalog Number: 82952-2-RR



## Basic Information

Catalog Number:

82952-2-RR

Size:

1000 ug/ml

Source:

Rabbit

Isotype:

IgG

Immunogen Catalog Number:

AG24059

GenBank Accession Number:

BC112078

GeneID (NCBI):

130749

UNIPROT ID:

Q8IVL8

Full Name:

carboxypeptidase O

Calculated MW:

374 aa, 43 kDa

Observed MW:

45 kDa

Purification Method:

Protein A purification

CloneNo.:

230153F4

Recommended Dilutions:

WB 1:5000-1:50000

## Applications

Tested Applications:

WB, FC (Intra), ELISA

Species Specificity:

human

Positive Controls:

WB : HeLa cells,

## Background Information

### Storage

Storage:

Store at -20°C. Stable for one year after shipment.

Storage Buffer:

PBS with 0.02% sodium azide and 50% glycerol pH 7.3.

Aliquoting is unnecessary for -20°C storage

For technical support and original validation data for this product please contact:

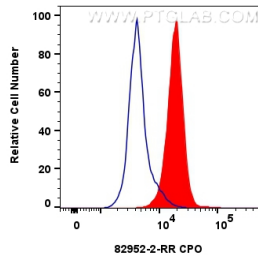
T: 4006900926

E: [Proteintech-CN@ptglab.com](mailto:Proteintech-CN@ptglab.com)

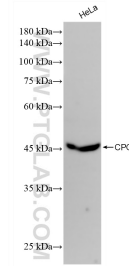
W: [ptgcn.com](http://ptgcn.com)

This product is exclusively available under Proteintech Group brand and is not available to purchase from any other manufacturer.

## Selected Validation Data



$1 \times 10^6$  HepG2 cells were intracellularly stained with 0.25  $\mu$ g CPO Recombinant antibody (82952-2-RR, Clone:230153F4) and CoraLite®488-Conjugated Goat Anti-Rabbit IgG(H+L) (SA00013-2) (red), or 0.25  $\mu$ g Rabbit IgG control Rabbit PolyAb (30000-0-AP) (blue). Cells were fixed with 4% PFA and permeabilized with Flow Cytometry Perm Buffer (PF00011-C).



HeLa cells were subjected to SDS PAGE followed by western blot with 82952-2-RR (CPO antibody) at dilution of 1:10000 incubated at room temperature for 1.5 hours.