

For Research Use Only

FDX1 Recombinant antibody

Catalog Number: 82957-1-RR



Basic Information

Catalog Number: 82957-1-RR	GenBank Accession Number: BC017063	Purification Method: Protein A purification
Size: 1000 µg/ml	GeneID (NCBI): 2230	CloneNo.: 230196B12
Source: Rabbit	UNIPROT ID: P10109	Recommended Dilutions: WB 1:2000-1:10000 IF 1:50-1:500
Isotype: IgG	Full Name: ferredoxin 1	
Immunogen Catalog Number: AG3301	Calculated MW: 184 aa, 19 kDa	
	Observed MW: 14 kDa	

Applications

Tested Applications: WB, IF/ICC, ELISA	Positive Controls: WB : A549 cells, HepG2 cells, HEK-293 cells, PC-3 cells
Species Specificity: Human	IF : HepG2 cells,

Background Information

FDX1(Ferredoxin-1) is also named as ADX, FDX, YAH1, LOH11CR1D and belongs to the adrenodoxin/putidaredoxin family. It is a small iron-sulfur protein that transfers electrons from NADPH through ferredoxin reductase to a terminal cytochrome P450 and it can only reduce mitochondrial CYP enzymes that are essential in adrenal steroidogenesis, bile acid formation, and vitamin D synthesis. The full length has a transit peptide of 60 amino acids.

Storage

Storage:
Store at -20°C. Stable for one year after shipment.
Storage Buffer:
PBS with 0.02% sodium azide and 50% glycerol pH 7.3.
Aliquoting is unnecessary for -20°C storage

For technical support and original validation data for this product please contact:

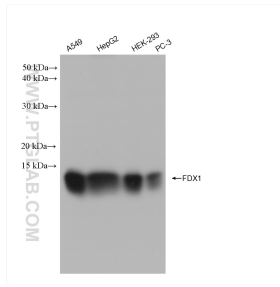
T: 4006900926

E: Proteintech-CN@ptglab.com

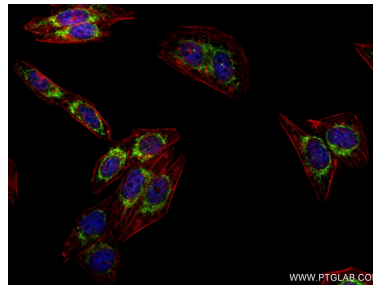
W: ptgcn.com

This product is exclusively available under Proteintech Group brand and is not available to purchase from any other manufacturer.

Selected Validation Data



Various lysates were subjected to SDS PAGE followed by western blot with 82957-1-RR (FDX1 antibody) at dilution of 1:5000 incubated at room temperature for 1.5 hours.



Immunofluorescent analysis of (4% PFA) fixed HepG2 cells using FDX1 antibody (82957-1-RR, Clone: 230196B12) at dilution of 1:200 and CoraLite®488-Conjugated AffiniPure Goat Anti-Rabbit IgG(H+L) (SA00013-2), CL594-Phalloidin (red).