

For Research Use Only

MAX Recombinant antibody, PBS Only (Detector)



Catalog Number: 82958-3-PBS

Basic Information

Catalog Number: 82958-3-PBS	GenBank Accession Number: BC003525	Purification Method: Protein A purification
Size: 1mg/ml	GeneID (NCBI): 4149	CloneNo.: 230215C6
Source: Rabbit	UNIPROT ID: P61244	Affinity: $K_D=2.32 \times 10^{-10}$
Isotype: IgG	Full Name: MYC associated factor X	$K_{off}=8.10 \times 10^{-5}$
Immunogen Catalog Number: AG0680	Calculated MW: 18 kDa	$K_{on}=3.49 \times 10^5$

Applications

Tested Applications:
Indirect ELISA, Cytometric bead array

Species Specificity:
Human

Background Information

Storage

Storage:
Store at -80°C.

Storage Buffer:
100% PBS pH 7.3

For technical support and original validation data for this product please contact:

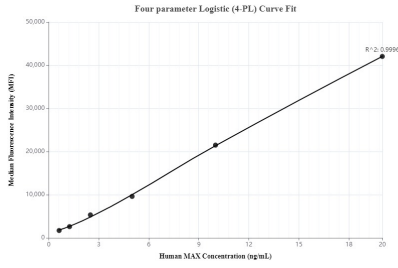
T: 4006900926

E: Proteintech-CN@ptglab.com

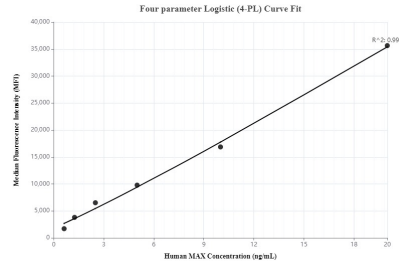
W: ptgcn.com

This product is exclusively available under Proteintech Group brand and is not available to purchase from any other manufacturer.

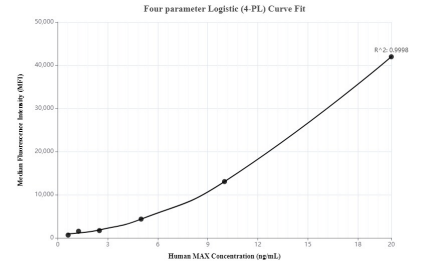
Selected Validation Data



Cytometric bead array standard curve of MP00126-1, MAX Recombinant Matched Antibody Pair - PBS only. Capture antibody: 82958-2-PBS. Detection antibody: 82958-3-PBS. Standard: Ag0680. Range: 0.625-20 ng/mL



Cytometric bead array standard curve of MP00126-2, MAX Recombinant Matched Antibody Pair - PBS only. Capture antibody: 82958-4-PBS. Detection antibody: 82958-3-PBS. Standard: Ag0680. Range: 0.625-20 ng/mL



Cytometric bead array standard curve of MP00126-3, MAX Recombinant Matched Antibody Pair - PBS only. Capture antibody: 82958-5-PBS. Detection antibody: 82958-3-PBS. Standard: Ag0680. Range: 0.625-20 ng/mL