

For Research Use Only

# RAB32 Recombinant antibody, PBS Only

Catalog Number: 82960-1-PBS



## Basic Information

<b>Catalog Number:</b> 82960-1-PBS	<b>GenBank Accession Number:</b> BC015061	<b>Purification Method:</b> Protein A purification
<b>Size:</b> 1mg/ml	<b>GeneID (NCBI):</b> 10981	<b>CloneNo.:</b> 230315A9
<b>Source:</b> Rabbit	<b>UNIPROT ID:</b> Q13637	
<b>Isotype:</b> IgG	<b>Full Name:</b> RAB32, member RAS oncogene family	
<b>Immunogen Catalog Number:</b> AG1450	<b>Calculated MW:</b> 25 kDa	
	<b>Observed MW:</b> 25-28 kDa	

## Applications

**Tested Applications:**  
WB, IF/ICC, FC (Intra), Indirect ELISA

**Species Specificity:**  
human, rat

## Background Information

Rab32 belongs to the Ras-like small GTPase superfamily, which regulate membrane dynamics, including membrane fusion/fission, exocytosis, and cytoskeletal trafficking. Rab32 anchors the type II regulatory subunit of protein kinase A to the mitochondrion and aids in mitochondrial fission. TRab32 also appears to be involved in autophagy and melanosome secretion.

## Storage

**Storage:**  
Store at -80°C.  
**The product is shipped with ice packs. Upon receipt, store it immediately at -80°C**

**Storage Buffer:**  
PBS Only

For technical support and original validation data for this product please contact:

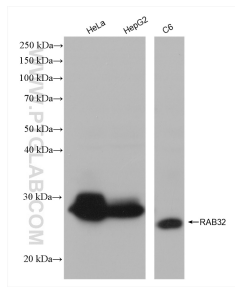
T: 4006900926

E: [Proteintech-CN@ptglab.com](mailto:Proteintech-CN@ptglab.com)

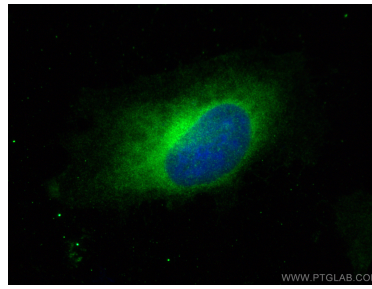
W: [ptgcn.com](http://ptgcn.com)

**This product is exclusively available under Proteintech Group brand and is not available to purchase from any other manufacturer.**

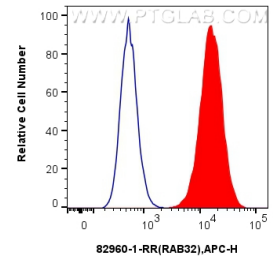
## Selected Validation Data



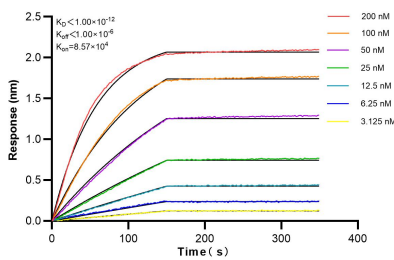
Various lysates were subjected to SDS PAGE followed by western blot with 82960-1-RR (RAB32 antibody) at dilution of 1:5000 incubated at room temperature for 1.5 hours. This data was developed using the same antibody clone with 82960-1-PBS in a different storage buffer formulation.



Immunofluorescent analysis of (-20°C Ethanol) fixed HeLa cells using RAB32 antibody (82960-1-RR, Clone: 230315A9) at dilution of 1:400 and Multi-rAb CoraLite® Plus 488-Goat Anti-Rabbit Recombinant Secondary Antibody (H+L) (RGAR002). This data was developed using the same antibody clone with 82960-1-PBS in a different storage buffer formulation.



$1 \times 10^6$  U-251 cells were intracellularly stained with 0.25 ug Anti-Human RAB32 (82960-1-RR, Clone:230315A9) and APC-Conjugated AffiniPure Goat Anti-Rabbit IgG(H+L)(red), or 0.25 ug Rabbit IgG control Rabbit PolyAb (30000-0-AP) (blue). Cells were fixed with 4% PFA and permeabilized with Flow Cytometry Perm Buffer (PF00011-C). This data was developed using the same antibody clone with 82960-1-PBS in a different storage buffer formulation.



Bi-layer interferometry (BLI) kinetic assays of 82960-1-RR against Human RAB32 were performed. The affinity constant is below 1 pM.