

For Research Use Only

RAB32 Recombinant antibody

Catalog Number: 82960-1-RR



Basic Information

Catalog Number: 82960-1-RR	GenBank Accession Number: BC015061	Purification Method: Protein A purification
Size: 1000 ug/ml	GeneID (NCBI): 10981	CloneNo.: 230315A9
Source: Rabbit	UNIPROT ID: Q13637	Recommended Dilutions: WB 1:2000-1:10000 IF/ICC 1:200-1:800
Isotype: IgG	Full Name: RAB32, member RAS oncogene family	
Immunogen Catalog Number: AG1450	Calculated MW: 25 kDa	
	Observed MW: 25-28 kDa	

Applications

Tested Applications: WB, IF/ICC, FC (Intra), ELISA	Positive Controls: WB : HeLa cells, HepG2 cells, C6 cells IF/ICC : HeLa cells,
Species Specificity: human, rat	

Background Information

Rab32 belongs to the Ras-like small GTPase superfamily, which regulate membrane dynamics, including membrane fusion/fission, exocytosis, and cytoskeletal trafficking. Rab32 anchors the type II regulatory subunit of protein kinase A to the mitochondrion and aids in mitochondrial fission. TRab32 also appears to be involved in autophagy and melanosome secretion.

Storage

Storage:
Store at -20°C. Stable for one year after shipment.
Storage Buffer:
PBS with 0.02% sodium azide and 50% glycerol pH 7.3.
Aliquoting is unnecessary for -20°C storage

For technical support and original validation data for this product please contact:

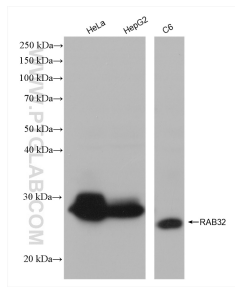
T: 4006900926

E: Proteintech-CN@ptglab.com

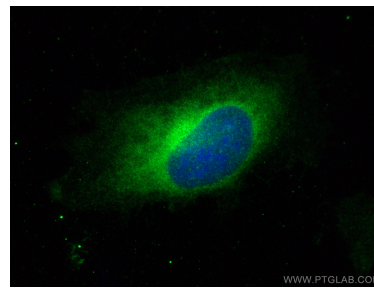
W: ptgcn.com

This product is exclusively available under Proteintech Group brand and is not available to purchase from any other manufacturer.

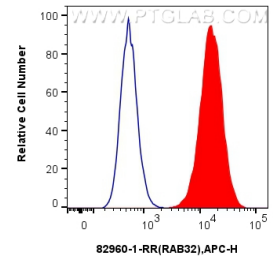
Selected Validation Data



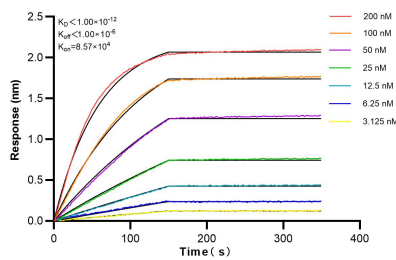
Various lysates were subjected to SDS PAGE followed by western blot with 82960-1-RR (RAB32 antibody) at dilution of 1:5000 incubated at room temperature for 1.5 hours.



Immunofluorescent analysis of (-20°C Ethanol) fixed HeLa cells using RAB32 antibody (82960-1-RR, Clone: 230315A9) at dilution of 1:400 and Multi-rAb CoraLite® Plus 488-Goat Anti-Rabbit Recombinant Secondary Antibody (H+L) (RGAR002).



1×10^6 U-251 cells were intracellularly stained with 0.25 μ g Anti-Human RAB32 (82960-1-RR, Clone:230315A9) and APC-Conjugated AffiniPure Goat Anti-Rabbit IgG(H+L)(red), or 0.25 μ g Rabbit IgG control Rabbit PolyAb (30000-0-AP) (blue). Cells were fixed with 4% PFA and permeabilized with Flow Cytometry Perm Buffer (PF00011-C).



Bi-layer interferometry (BLI) kinetic assays of 82960-1-RR against Human RAB32 were performed. The affinity constant is below 1 pM.