

For Research Use Only

RAB32 Recombinant antibody, PBS Only (Capture)

Catalog Number: 82960-3-PBS



Basic Information

Catalog Number: 82960-3-PBS	GenBank Accession Number: BC015061	Purification Method: Protein A purification
Size: 1mg/ml	GeneID (NCBI): 10981	CloneNo.: 230315C2
Source: Rabbit	UNIPROT ID: Q13637	
Isotype: IgG	Full Name: RAB32, member RAS oncogene family	
Immunogen Catalog Number: AG1450	Calculated MW: 25 kDa	

Applications

Tested Applications:
Cytometric bead array, Sandwich ELISA, Indirect ELISA,
Sample test

Species Specificity:
human

Background Information

Storage

Storage:
Store at -80°C.
The product is shipped with ice packs. Upon receipt, store it immediately at -80°C

Storage Buffer:
100% PBS pH 7.3

For technical support and original validation data for this product please contact:

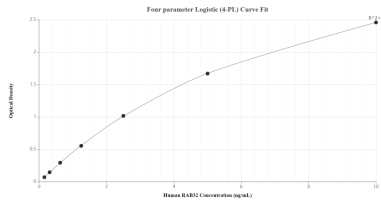
T: 4006900926

E: Proteintech-CN@ptglab.com

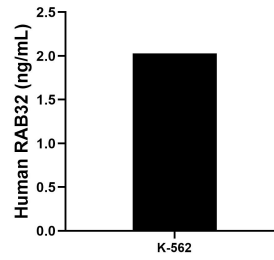
W: ptgcn.com

This product is exclusively available under Proteintech Group brand and is not available to purchase from any other manufacturer.

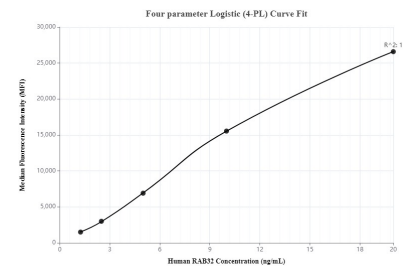
Selected Validation Data



Sandwich ELISA standard curve of MP00043-3, Human RAB32 Recombinant Matched Antibody Pair - PBS only. 82960-3-PBS was coated to a plate as the capture antibody and incubated with serial dilutions of standard Ag1450. 82960-4-PBS was HRP conjugated as the detection antibody. Range: 0.156-10 ng/mL



The mean RAB32 concentration was determined to be 2.03 ng/mL in K-562 cell extract based on a 4.50 mg/mL extract load.



Cytometric bead array standard curve of MP00043-2, RAB32 Recombinant Matched Antibody Pair, PBS Only. Capture antibody: 82960-3-PBS. Detection antibody: 82960-4-PBS. Standard: Ag1450. Range: 1.25-20 ng/mL