

For Research Use Only

# BBS4 Recombinant antibody

Catalog Number: 82961-1-RR



## Basic Information

<b>Catalog Number:</b> 82961-1-RR	<b>GenBank Accession Number:</b> BC027624	<b>Purification Method:</b> Protein A purification
<b>Size:</b> 1000 µg/ml	<b>GeneID (NCBI):</b> 585	<b>CloneNo.:</b> 230303C2
<b>Source:</b> Rabbit	<b>UNIPROT ID:</b> Q96RK4	<b>Recommended Dilutions:</b> WB 1:2000-1:10000 IF 1:500-1:2000
<b>Isotype:</b> IgG	<b>Full Name:</b> Bardet-Biedl syndrome 4	
<b>Immunogen Catalog Number:</b> AG3430	<b>Calculated MW:</b> 519 aa, 58 kDa	
	<b>Observed MW:</b> 60 kDa	

## Applications

<b>Tested Applications:</b> WB, IF/ICC, ELISA	<b>Positive Controls:</b> WB : HEK-293 cells, HeLa cells, SH-SY5Y cells IF : hTERT-RPE1 cells,
<b>Species Specificity:</b> Human	

## Background Information

BBS4 (Bardet-Biedl syndrome protein 4) is one of the early BBS proteins discovered, with 35 mutations reported to cause the BBS phenotype (PMID: 26762677). BBS4 undergoes localization to the centriolar satellites of centrosomes and basal body of primary cilia, where it takes part in recruiting cargo to centriolar satellites and allowing the formation of a functional centrosomal microtubule organizing center (MTOC) (PMID: 25860617). Some research has found that BBS4 expression in humans during the development of CNS and sensory organs, concerning the cardinal clinical signs of BBS (PMID: 33860840).

## Storage

**Storage:**  
Store at -20°C. Stable for one year after shipment.  
**Storage Buffer:**  
PBS with 0.02% sodium azide and 50% glycerol pH 7.3.  
Aliquoting is unnecessary for -20°C storage

For technical support and original validation data for this product please contact:

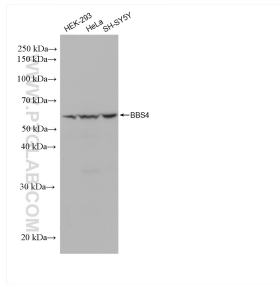
T: 4006900926

E: [Proteintech-CN@ptglab.com](mailto:Proteintech-CN@ptglab.com)

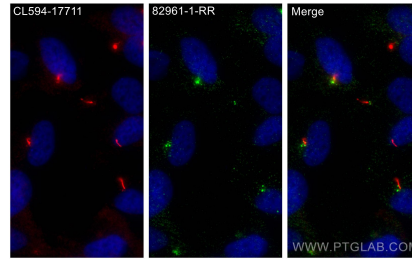
W: [ptgcn.com](http://ptgcn.com)

This product is exclusively available under Proteintech Group brand and is not available to purchase from any other manufacturer.

## Selected Validation Data



Various lysates were subjected to SDS PAGE followed by western blot with 82961-1-RR (BBS4 antibody) at dilution of 1:5000 incubated at room temperature for 1.5 hours.



Immunofluorescent analysis of (4% PFA) fixed hTERT-RPE1 cells using BBS4 antibody (82961-1-RR, Clone: 230303C2) at dilution of 1:1000 and CoraLite® 488-Conjugated AffiniPure Goat Anti-Rabbit IgG(H+L) (SA00013-2), CoraLite® 594 ARL13B antibody (CL594-17711, red).