

For Research Use Only

RAN Recombinant antibody

Catalog Number: 82978-1-RR



Basic Information

Catalog Number: 82978-1-RR	GenBank Accession Number: BC004272	Purification Method: Protein A purification
Size: 250 µg/ml	GeneID (NCBI): 5901	CloneNo.: 230317F3
Source: Rabbit	UNIPROT ID: P62826	Recommended Dilutions: WB 1:1000-1:5000 IF 1:50-1:500
Isotype: IgG	Full Name: RAN, member RAS oncogene family	
Immunogen Catalog Number: AG0748	Calculated MW: 25 kDa	
	Observed MW: 24 kDa	

Applications

Tested Applications: FC, IF/ICC, WB, ELISA	Positive Controls:
Species Specificity: Human, mouse, rat	WB : HeLa cells, A375 cells, Jurkat cells, NIH/3T3 cells, C6 cells
	IF : HeLa cells,

Background Information

RAN is also named as ARA24, Ras-like protein TC4 and GTPase Ran, and belongs to the small GTPase superfamily family and the Ran family. GTPase Ran switches between a cytoplasmic GDP- and a nuclear GTP-bound state by nucleotide exchange and GTP hydrolysis (PMID:7819259, PMID:32528950). RAN (GTP-bound form) triggers microtubule assembly at mitotic chromosomes and is required for normal mitotic spindle assembly and chromosome segregation (PMID:10408446, PMID:29040603, PMID:32528950).

Storage

Storage:
Store at -20°C. Stable for one year after shipment.

Storage Buffer:
PBS with 0.02% sodium azide and 50% glycerol pH 7.3.

Aliquoting is unnecessary for -20°C storage

For technical support and original validation data for this product please contact:

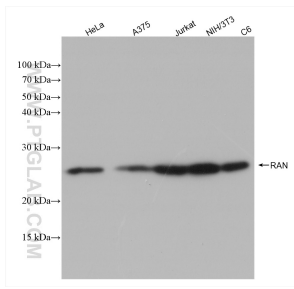
T: 4006900926

E: Proteintech-CN@ptglab.com

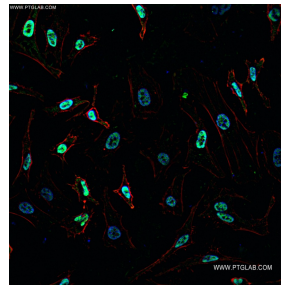
W: ptgcn.com

This product is exclusively available under Proteintech Group brand and is not available to purchase from any other manufacturer.

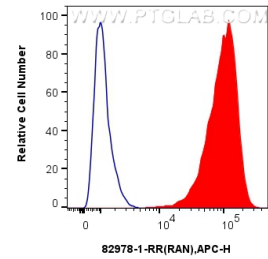
Selected Validation Data



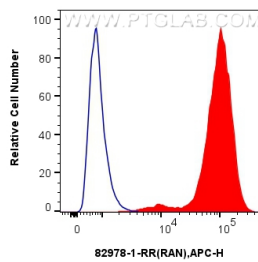
Various lysates were subjected to SDS PAGE followed by western blot with 82978-1-RR (RAN antibody) at dilution of 1:2500 incubated at room temperature for 1.5 hours.



Immunofluorescent analysis of (4% PFA) fixed HeLa cells using RAN antibody (82978-1-RR, Clone: 230317F3) at dilution of 1:100 and CoraLite®488-Conjugated AffiniPure Goat Anti-Mouse IgG(H+L) (SA00013-1).



1×10^6 A431 cells were intracellularly stained with 0.25 ug Anti-Human RAN (82978-1-RR, Clone:230317F3) and APC-Conjugated AffiniPure Goat Anti-Rabbit IgG(H+L)(red), or 0.25 ug Rabbit IgG control Rabbit PolyAb (30000-0-AP) (blue). Cells were fixed and permeabilized with True-Nuclear Transcription Factor Buffer Set.



1×10^6 HeLa cells were intracellularly stained with 0.25 ug Anti-Human RAN (82978-1-RR, Clone:230317F3) and APC-Conjugated AffiniPure Goat Anti-Rabbit IgG(H+L)(red), or 0.25 ug Rabbit IgG control Rabbit PolyAb (30000-0-AP) (blue). Cells were fixed and permeabilized with True-Nuclear Transcription Factor Buffer Set.