

For Research Use Only

TMEM132E Recombinant antibody, PBS Only (Detector)



Catalog Number: 82983-2-PBS

Basic Information

Catalog Number: 82983-2-PBS	GenBank Accession Number: NM_001304438	Purification Method: Protein A purification
Size: 1mg/ml	GeneID (NCBI): 124842	CloneNo.: 230525E12
Source: Rabbit	Full Name: transmembrane protein 132E	
Isotype: IgG	Calculated MW: 116 kDa	
Immunogen Catalog Number: AG26772		

Applications

Tested Applications:
WB, Indirect ELISA, Cytometric bead array

Species Specificity:
Human

Background Information

Storage

Storage:
Store at -80°C.
The product is shipped with ice packs. Upon receipt, store it immediately at -80°C

Storage Buffer:
100% PBS pH 7.3

For technical support and original validation data for this product please contact:

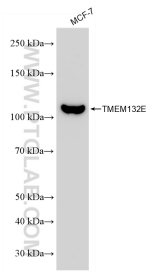
T: 4006900926

E: Proteintech-CN@ptglab.com

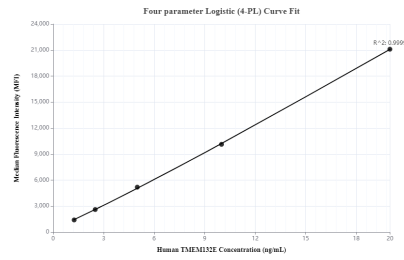
W: ptgcn.com

This product is exclusively available under Proteintech Group brand and is not available to purchase from any other manufacturer.

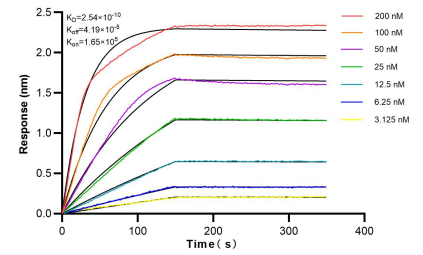
Selected Validation Data



MCF-7 cells were subjected to SDS PAGE followed by western blot with 82983-2-RR (TMEM132E antibody) at dilution of 1:10000 incubated at room temperature for 1.5 hours. This data was developed using the same antibody clone with 82983-2-PBS in a different storage buffer formulation.



Cytometric bead array standard curve of MP00054-2, TMEM132E Recombinant Matched Antibody Pair, PBS Only. Capture antibody: 82983-1-PBS. Detection antibody: 82983-2-PBS. Standard: Ag26772. Range: 1.25-20 ng/mL.



Biolayer interferometry (BLI) kinetic assays of 82983-2-RR against Human TMEM132E were performed. The affinity constant is 0.254 nM.