

For Research Use Only

# ADAMDEC1 Recombinant antibody, PBS Only



Catalog Number: 82985-1-PBS

## Basic Information

<b>Catalog Number:</b> 82985-1-PBS	<b>GenBank Accession Number:</b> BC074877	<b>Purification Method:</b> Protein A purification
<b>Size:</b> 1 mg/ml	<b>GeneID (NCBI):</b> 27299	<b>CloneNo.:</b> 230367F9
<b>Source:</b> Rabbit	<b>UNIPROT ID:</b> O15204	
<b>Isotype:</b> IgG	<b>Full Name:</b> ADAM-like, decysin 1	
<b>Immunogen Catalog Number:</b> AG12265	<b>Calculated MW:</b> 470 aa, 53 kDa	
	<b>Observed MW:</b> 48-53 kDa	

## Applications

**Tested Applications:**  
WB, Indirect ELISA

**Species Specificity:**  
Human

## Background Information

Metalloendopeptidase ADAM-Like Decysin 1 (ADAMDEC1) was first identified as a unique member of the matrix metalloprotease (ADAM) family. ADAMs are increasingly recognized as playing an important role in gut homeostasis and bowel inflammation. ADAMDEC1 is abundantly, and almost exclusively, expressed in the gastrointestinal (GI) tract.

## Storage

**Storage:**  
Store at -80°C.

**Storage Buffer:**  
PBS Only

For technical support and original validation data for this product please contact:

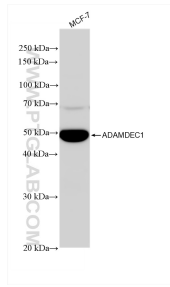
T: 4006900926

E: [Proteintech-CN@ptglab.com](mailto:Proteintech-CN@ptglab.com)

W: [ptgcn.com](http://ptgcn.com)

**This product is exclusively available under Proteintech Group brand and is not available to purchase from any other manufacturer.**

## Selected Validation Data



MCF-7 cells were subjected to SDS PAGE followed by western blot with 82985-1-RR (ADAMDEC1 antibody) at dilution of 1:10000 incubated at room temperature for 1.5 hours. This data was developed using the same antibody clone with 82985-1-PBS in a different storage buffer formulation.