

For Research Use Only

ADAMDEC1 Recombinant antibody, PBS Only (Capture/Detector)

Catalog Number: 82985-5-PBS



Basic Information

Catalog Number: 82985-5-PBS	GenBank Accession Number: BC074877	Purification Method: Protein A purification
Size: 1mg/ml	GeneID (NCBI): 27299	CloneNo.: 230367D12
Source: Rabbit	UNIPROT ID: O15204	
Isotype: IgG	Full Name: ADAM-like, decysin 1	
Immunogen Catalog Number: AG12265	Calculated MW: 470 aa, 53 kDa	

Applications

Tested Applications:
Cytometric bead array, Indirect ELISA

Species Specificity:
human

Background Information

Storage

Storage:
Store at -80°C.
The product is shipped with ice packs. Upon receipt, store it immediately at -80°C

Storage Buffer:
100% PBS pH 7.3

For technical support and original validation data for this product please contact:

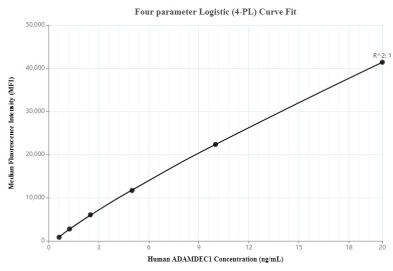
T: 4006900926

E: Proteintech-CN@ptglab.com

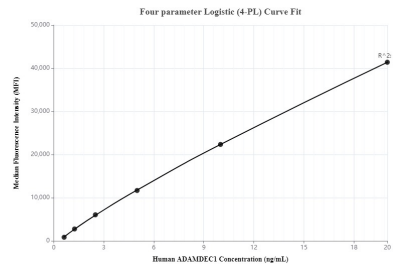
W: ptgcn.com

This product is exclusively available under Proteintech Group brand and is not available to purchase from any other manufacturer.

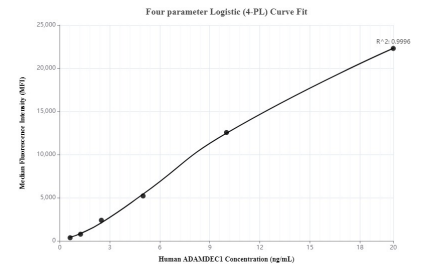
Selected Validation Data



Cytometric bead array standard curve of MP00007-2, ADAMDEC1 Recombinant Matched Antibody Pair, PBS Only. Capture antibody: 82985-5-PBS. Detection antibody: 82985-3-PBS. Standard: Ag12265. Range: 0.625-20 ng/mL



Cytometric bead array standard curve of MP00007-1, ADAMDEC1 Recombinant Matched Antibody Pair, PBS Only. Capture antibody: 82985-5-PBS. Detection antibody: 82985-4-PBS. Standard: Ag12265. Range: 0.625-20 ng/mL



Cytometric bead array standard curve of MP00007-3, ADAMDEC1 Recombinant Matched Antibody Pair, PBS Only. Capture antibody: 82985-2-PBS. Detection antibody: 82985-5-PBS. Standard: Ag12265. Range: 0.625-20 ng/mL