

For Research Use Only

SLC25A3 Recombinant antibody, PBS Only (Detector)



Catalog Number: 82988-2-PBS

Basic Information

Catalog Number: 82988-2-PBS	GenBank Accession Number: BC003504	Purification Method: Protein A purification
Size: 1mg/ml	GeneID (NCBI): 5250	CloneNo.: 230054A11
Source: Rabbit	UNIPROT ID: Q00325	
Isotype: IgG	Full Name: solute carrier family 25 (mitochondrial carrier; phosphate carrier), member 3	
Immunogen Catalog Number: AG0667	Calculated MW: 40 kDa	

Applications

Tested Applications:
Indirect ELISA, Cytometric bead array

Species Specificity:
Human

Background Information

Storage

Storage:
Store at -80°C.
The product is shipped with ice packs. Upon receipt, store it immediately at -80°C

Storage Buffer:
100% PBS pH 7.3

For technical support and original validation data for this product please contact:

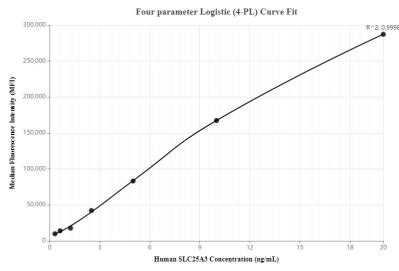
T: 4006900926

E: Proteintech-CN@ptglab.com

W: ptgcn.com

This product is exclusively available under Proteintech Group brand and is not available to purchase from any other manufacturer.

Selected Validation Data



Cytometric bead array standard curve of MP00046-2, SLC25A3 Recombinant Matched Antibody Pair, PBS Only. Capture antibody: 82988-3-PBS. Detection antibody: 82988-2-PBS. Standard: Ag0667. Range: 0.313-20 ng/mL.