

For Research Use Only

SLC25A3 Recombinant antibody, PBS Only (Capture)



Catalog Number: 82988-3-PBS

Basic Information

| | | |
|--|---|---|
| Catalog Number: 82988-3-PBS | GenBank Accession Number: BC003504 | Purification Method: Protein A purification |
| Size: 1mg/ml | GeneID (NCBI): 5250 | CloneNo.: 230054D6 |
| Source: Rabbit | UNIPROT ID: Q00325 | |
| Isotype: IgG | Full Name: solute carrier family 25 (mitochondrial carrier; phosphate carrier), member 3 | |
| Immunogen Catalog Number: AG0667 | Calculated MW: 40 kDa | |

Applications

Tested Applications:
Indirect ELISA, Cytometric bead array

Species Specificity:
Human

Background Information

Storage

Storage:
Store at -80°C.
The product is shipped with ice packs. Upon receipt, store it immediately at -80°C

Storage Buffer:
100% PBS pH 7.3

For technical support and original validation data for this product please contact:

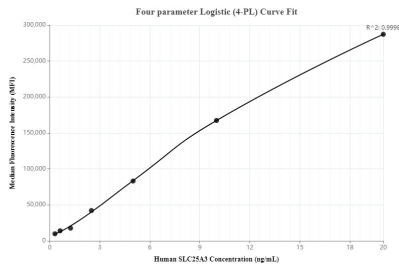
T: 4006900926

E: Proteintech-CN@ptglab.com

W: ptgcn.com

This product is exclusively available under Proteintech Group brand and is not available to purchase from any other manufacturer.

Selected Validation Data



Cytometric bead array standard curve of MP00046-2, SLC25A3 Recombinant Matched Antibody Pair, PBS Only. Capture antibody: 82988-3-PBS. Detection antibody: 82988-2-PBS. Standard: Ag0667. Range: 0.313-20 ng/mL.