

For Research Use Only

RILP Recombinant antibody, PBS Only (Capture)



Catalog Number: 82996-4-PBS

Basic Information

Catalog Number: 82996-4-PBS	GenBank Accession Number: BC031621	Purification Method: Protein A purification
Size: 1mg/ml	GeneID (NCBI): 83547	CloneNo.: 230208G2
Source: Rabbit	UNIPROT ID: Q96NA2	Affinity: $K_D=1.04 \times 10^{-11}$
Isotype: IgG	Full Name: Rab interacting lysosomal protein	$K_{Off}=2.33 \times 10^{-5}$
Immunogen Catalog Number: AG4472	Calculated MW: 401 aa, 41 kDa	$K_{On}=2.05 \times 10^6$

Applications

Tested Applications:
WB, Indirect ELISA, Cytometric bead array

Species Specificity:
Human

Background Information

Storage

Storage:
Store at -80°C.

Storage Buffer:
100% PBS pH 7.3

For technical support and original validation data for this product please contact:

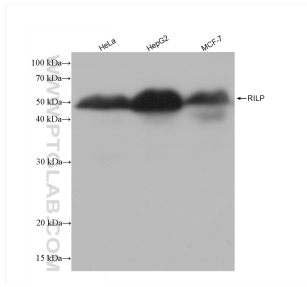
T: 4006900926

E: Proteintech-CN@ptglab.com

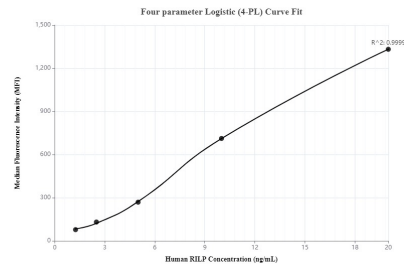
W: ptgcn.com

This product is exclusively available under Proteintech Group brand and is not available to purchase from any other manufacturer.

Selected Validation Data



Various lysates were subjected to SDS PAGE followed by western blot with 82996-4-RR (RILP antibody) at dilution of 1:2000 incubated at room temperature for 1.5 hours. This data was developed using the same antibody clone with 82996-4-PBS in a different storage buffer formulation.



Cytometric bead array standard curve of MP00025-1, RILP Recombinant Matched Antibody Pair - PBS only. Capture antibody: 82996-4-PBS. Detection antibody: 82996-3-PBS. Standard: Ag4472. Range: 1.25-20 ng/mL.