

For Research Use Only

MTAP Recombinant antibody, PBS Only (Detector)



Catalog Number: 83005-1-PBS

Basic Information

Catalog Number: 83005-1-PBS	GenBank Accession Number: BC018625	Purification Method: Protein A purification
Size: 1mg/ml	GeneID (NCBI): 4507	CloneNo.: 240030A3
Source: Rabbit	UNIPROT ID: Q13126	
Isotype: IgG	Full Name: methylthioadenosine phosphorylase	
Immunogen Catalog Number: AG2051	Calculated MW: 283 aa, 31 kDa	

Applications

Tested Applications:
WB, Indirect ELISA, Cytometric bead array

Species Specificity:
Human

Background Information

Storage

Storage:
Store at -80°C.
The product is shipped with ice packs. Upon receipt, store it immediately at -80°C

Storage Buffer:
100% PBS pH 7.3

For technical support and original validation data for this product please contact:

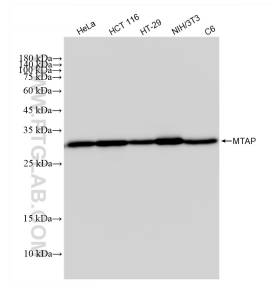
T: 4006900926

E: Proteintech-CN@ptglab.com

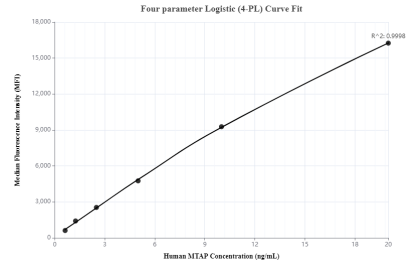
W: ptgcn.com

This product is exclusively available under Proteintech Group brand and is not available to purchase from any other manufacturer.

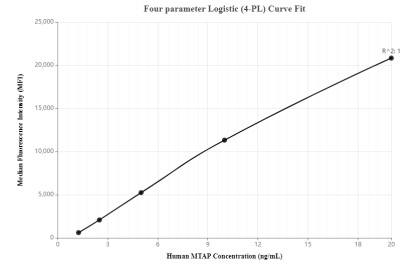
Selected Validation Data



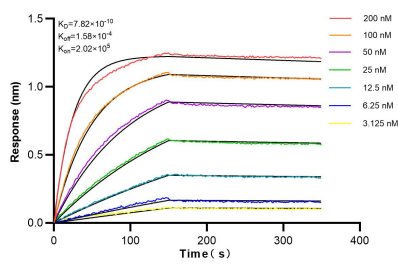
Various lysates were subjected to SDS PAGE followed by western blot with 83005-1-RR (MTAP antibody) at dilution of 1:10000 incubated at room temperature for 1.5 hours. This data was developed using the same antibody clone with 83005-1-PBS in a different storage buffer formulation.



Cytometric bead array standard curve of MP00050-1, MTAP Recombinant Matched Antibody Pair, PBS Only. Capture antibody: 83005-2-PBS. Detection antibody: 83005-1-PBS. Standard: Ag2051. Range: 0.625-20 ng/mL.



Cytometric bead array standard curve of MP00050-3, MTAP Recombinant Matched Antibody Pair, PBS Only. Capture antibody: 83005-4-PBS. Detection antibody: 83005-1-PBS. Standard: Ag2051. Range: 1.25-20 ng/mL.



Bi-layer interferometry (BLI) kinetic assays of 83005-1-RR against Human MTAP were performed. The affinity constant is 0.782 nM.