

For Research Use Only

LAMA2 Recombinant antibody, PBS Only (Detector)

Catalog Number: 83007-2-PBS



Basic Information

Catalog Number:

83007-2-PBS

Concentration:

1mg/ml

Source:

Rabbit

Isotype:

IgG

Immunogen Catalog Number:

AG34494

GenBank Accession Number:

NM_000426

GeneID (NCBI):

3908

UNIPROT ID:

P24043

Full Name:

laminin, alpha 2

Calculated MW:

344 kDa

Observed MW:

344 kDa

Purification Method:

Protein A purification

CloneNo.:

230541D5

Applications

Tested Applications:

WB, Cytometric bead array, Indirect ELISA

Species Specificity:

human, mouse, rat

Background Information

The laminin subunit alpha 2 (LAMA2) gene encodes an alpha 2 chain, which constitutes one of the subunits of laminin 2 (merosin) and laminin 4 (s-merosin). Basal laminae are structural components of the extracellular matrix that influence cell proliferation and differentiation, and laminin subunit alpha 2 (LAMA2) is the major component of the basal laminae- α subunit of laminin. (PMID: 30728939)

Storage

Storage:

Store at -80°C.

The product is shipped with ice packs. Upon receipt, store it immediately at -80°C

Storage Buffer:

PBS only, pH7.3

For technical support and original validation data for this product please contact:

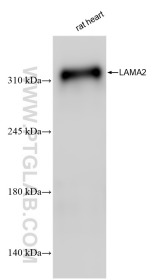
T: 4006900926

E: Proteintech-CN@ptglab.com

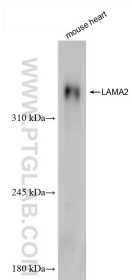
W: ptgcn.com

This product is exclusively available under Proteintech Group brand and is not available to purchase from any other manufacturer.

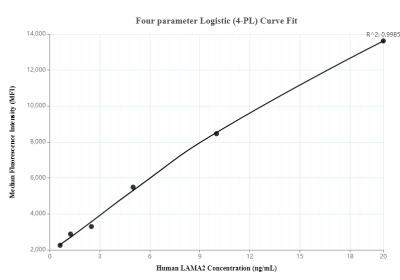
Selected Validation Data



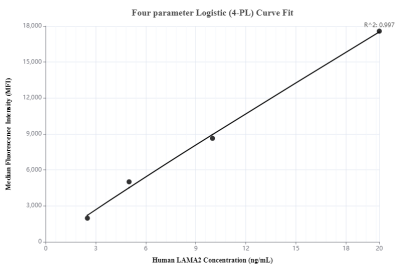
Rat heart tissue were subjected to SDS PAGE followed by western blot with 83007-2-RR (LAMA2 antibody) at dilution of 1:1000 incubated at room temperature for 1.5 hours. This data was developed using the same antibody clone with 83007-2-PBS in a different storage buffer formulation.



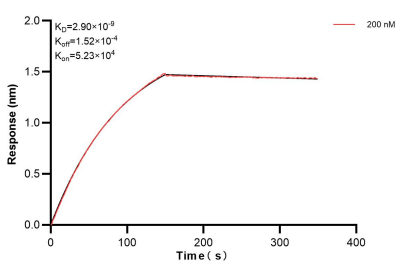
mouse heart tissue were subjected to SDS PAGE followed by western blot with 83007-2-RR (LAMA2 antibody) at dilution of 1:1000 incubated at room temperature for 1.5 hours. This data was developed using the same antibody clone with 83007-2-PBS in a different storage buffer formulation.



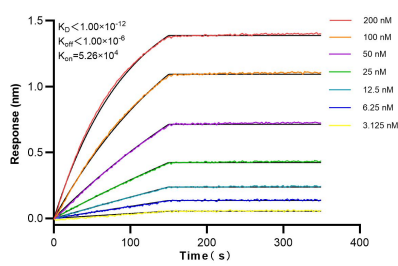
Cytometric bead array standard curve of MP00041-1, LAMA2 Recombinant Matched Antibody Pair, PBS Only. Capture antibody: 83007-3-PBS. Detection antibody: 83007-2-PBS. Standard: Ag34494. Range: 0.625-20 ng/mL



Cytometric bead array standard curve of MP00041-2, LAMA2 Recombinant Matched Antibody Pair, PBS Only. Capture antibody: 83007-1-PBS. Detection antibody: 83007-2-PBS. Standard: Ag34494. Range: 2.5-20 ng/mL



Biolayer interferometry (BLI) kinetic assay of 83007-2-PBS against Human LAMA2 was performed. The affinity constant is below 1 pM.



Biolayer interferometry (BLI) kinetic assays of 83007-2-RR against Human LAMA2 were performed. The affinity constant is below 1 pM.