

For Research Use Only

IL-12/IL-23 p40 Recombinant antibody, PBS Only (Detector)

Catalog Number:83008-6-PBS



Basic Information

| | | |
|---------------------------------------|--|---|
| Catalog Number: 83008-6-PBS | GenBank Accession Number: BC067498 | Purification Method: Protein A purification |
| Size: 1 mg/ml | GeneID (NCBI): 3593 | CloneNo.: 241600G10 |
| Source: Rabbit | UNIPROT ID: P29460 | |
| Isotype: IgG | Full Name: interleukin 12B (natural killer cell stimulatory factor 2, cytotoxic lymphocyte maturation factor 2, p40) | |
| | Calculated MW: 328 aa, 37 kDa | |

Applications

Tested Applications:
Sandwich ELISA, Indirect ELISA, Sample test

Species Specificity:
human

Background Information

Storage

Storage:
Store at -80°C.
The product is shipped with ice packs. Upon receipt, store it immediately at -80°C

Storage Buffer:
PBS Only

For technical support and original validation data for this product please contact:

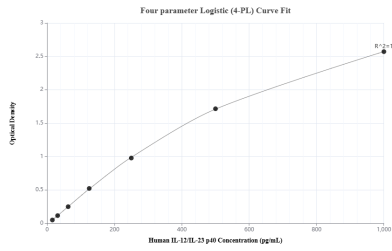
T: 4006900926

E: Proteintech-CN@ptglab.com

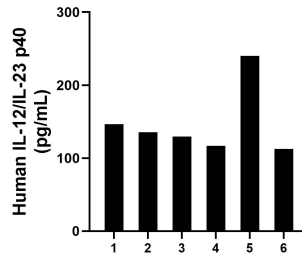
W: ptgcn.com

This product is exclusively available under Proteintech Group brand and is not available to purchase from any other manufacturer.

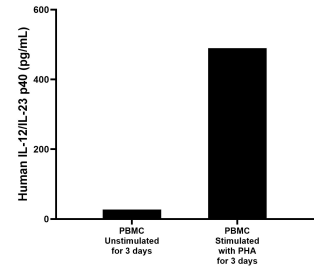
Selected Validation Data



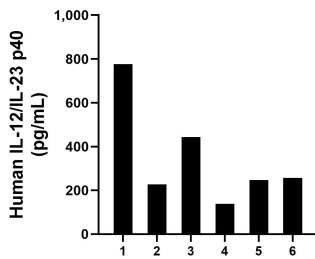
Sandwich ELISA standard curve of MP00035-4, Human IL-12/IL-23 p40 Recombinant Matched Antibody Pair - PBS only. 83008-5-PBS was coated to a plate as the capture antibody and incubated with serial dilutions of standard Eg0431. 83008-6-PBS was HRP conjugated as the detection antibody. Range: 15.6-1000 pg/mL



Plasma of six individual healthy human donors was measured. The human IL-12/IL-23 p40 concentration of detected samples was determined to be 146.9 pg/mL with a range of 112.74 - 240.1 pg/mL.



Human peripheral blood mononuclear cells (PBMC) were cultured unstimulated or stimulated with 10 μ g/mL PHA for 3 days. The mean IL-12/IL-23 p40 concentration was determined to be 27.3 pg/mL in unstimulated PBMC supernatant, 489.4 pg/mL in PHA stimulated PBMC supernatant.



Serum of six individual healthy human donors was measured. The human IL-12/IL-23 p40 concentration of detected samples was determined to be 348.4 pg/mL with a range of 138.9 - 776.9 pg/mL.