

For Research Use Only

COL6A3-Specific Recombinant antibody

Catalog Number:83010-1-RR



Basic Information

Catalog Number: 83010-1-RR	GenBank Accession Number: NM_004369	Purification Method: Protein A purification
Size: 1000 ug/ml	GeneID (NCBI): 1293	CloneNo.: 230540A11
Source: Rabbit	UNIPROT ID: P12111	Recommended Dilutions: WB 1:5000-1:50000
Isotype: IgG	Full Name: collagen, type VI, alpha 3	
Immunogen Catalog Number: AG34752	Calculated MW: 344 kDa	
	Observed MW: 300 kDa	

Applications

Tested Applications: WB, ELISA	Positive Controls: WB : A375 cells,
Species Specificity: human	

Background Information

COL6A3 belongs to the type VI collagen family. Collagen VI acts as a cell-binding protein. It is expected to be expressed in smooth muscle. And the calculated molecular weight of COL6A3 is 343 kDa. The protein has similar expression in obese and T2DM (2 patients), and it regulates the chemotaxis and inflammation of macrophages in adipose tissue. Its expression is also related to weight gain. The expression of this protein in adipocytes is related to insulin resistance, which is believed to depend on PPAR (peroxisome proliferator-activated receptor) α -mediated adipocyte development (PMID: 25337653). Defects in COL6A3 are a cause of Bethlem myopathy (BM). Defects in COL6A3 are a cause of Ullrich congenital muscular dystrophy (UCMD) which also known as Ullrich scleroatonic muscular dystrophy. This antibody is specific to COL6A3.

Storage

Storage:
Store at -20°C. Stable for one year after shipment.
Storage Buffer:
PBS with 0.02% sodium azide and 50% glycerol pH 7.3.
Aliquoting is unnecessary for -20°C storage

For technical support and original validation data for this product please contact:

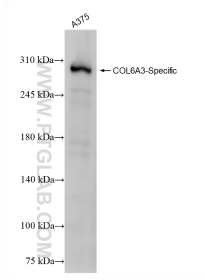
T: 4006900926

E: Proteintech-CN@ptglab.com

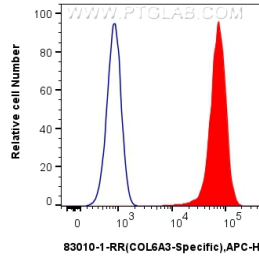
W: ptgcn.com

This product is exclusively available under Proteintech Group brand and is not available to purchase from any other manufacturer.

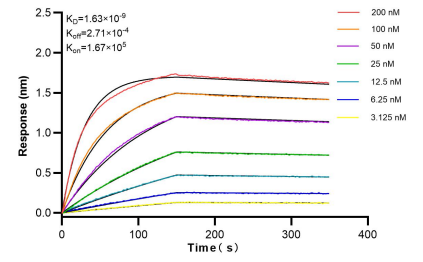
Selected Validation Data



A375 cells were subjected to SDS PAGE followed by western blot with 83010-1-RR (COL6A3-Specific antibody) at dilution of 1:10000 incubated at room temperature for 1.5 hours.



1×10^6 HeLa cells were intracellularly stained with 0.25 μ g COL6A3-Specific Recombinant antibody (83010-1-RR, Clone:230540A11) and APC-Conjugated Goat Anti-Rabbit IgG(H+L)(red), or 0.25 μ g Isotype Control (blue). Cells were fixed with 4% PFA and permeabilized with Flow Cytometry Perm Buffer (PF00011-C).



Biacore interferometry (BLI) kinetic assays of 83010-1-RR against Human COL6A3-Specific were performed. The affinity constant is 1.63 nM.