

For Research Use Only

# COL6A3-Specific Recombinant antibody, PBS Only (Capture/Detector)

Catalog Number:83010-4-PBS



## Basic Information

Catalog Number: 83010-4-PBS	GenBank Accession Number: NM_004369	Purification Method: Protein A purification
Concentration: 1 mg/ml	GeneID (NCBI): 1293	CloneNo.: 230540E3
Source: Rabbit	UNIPROT ID: P12111	
Isotype: IgG	Full Name: collagen, type VI, alpha 3	
Immunogen Catalog Number: AG34752	Calculated MW: 344 kDa	

## Applications

**Tested Applications:**  
Cytometric bead array, Sandwich ELISA, Indirect ELISA,  
Sample test

**Species Specificity:**  
human

## Background Information

### Storage

**Storage:**  
Store at -80°C.  
**The product is shipped with ice packs. Upon receipt, store it immediately at -80°C**  
**Storage Buffer:**  
100% PBS pH 7.3

For technical support and original validation data for this product please contact:

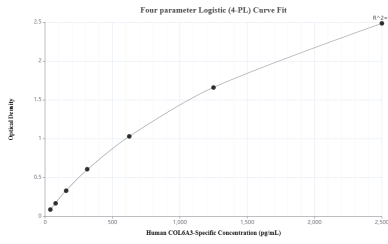
T: 4006900926

E: [Proteintech-CN@ptglab.com](mailto:Proteintech-CN@ptglab.com)

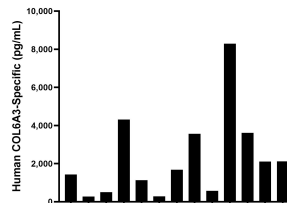
W: [ptgcn.com](http://ptgcn.com)

**This product is exclusively available under Proteintech Group brand and is not available to purchase from any other manufacturer.**

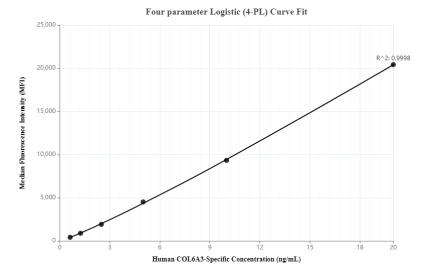
## Selected Validation Data



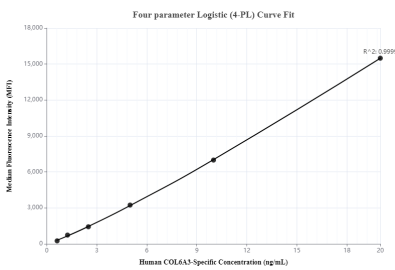
Sandwich ELISA standard curve of MP00027-4, Human COL6A3-Specific Monoclonal Matched Antibody Pair - PBS only. 83010-4-PBS was coated to a plate as the capture antibody and incubated with serial dilutions of standard Ag34752. 83010-5-PBS was HRP conjugated as the detection antibody. Range: 39.06-2500 pg/mL



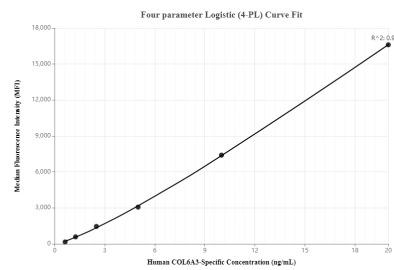
Serum of thirteen individual healthy human donors were measured. The human COL6A3-Specific concentration of detected samples was determined to be 2,299.8 pg/mL with a range of 274.4 - 8,287.33 pg/mL



Cytometric bead array standard curve of MP00027-1, COL6A3-Specific Recombinant Matched Antibody Pair, PBS Only. Capture antibody: 83010-3-PBS. Detection antibody: 83010-4-PBS. Standard: Ag34752. Range: 0.625-20 ng/mL



Cytometric bead array standard curve of MP00027-2, COL6A3-Specific Recombinant Matched Antibody Pair, PBS Only. Capture antibody: 83010-2-PBS. Detection antibody: 83010-4-PBS. Standard: Ag34752. Range: 0.625-20 ng/mL



Cytometric bead array standard curve of MP00027-3, COL6A3-Specific Recombinant Matched Antibody Pair, PBS Only. Capture antibody: 83010-1-PBS. Detection antibody: 83010-4-PBS. Standard: Ag34752. Range: 0.625-20 ng/mL