

For Research Use Only

COL6A3-Specific Recombinant antibody, PBS Only (Detector)

Catalog Number:83010-5-PBS



Basic Information

Catalog Number: 83010-5-PBS	GenBank Accession Number: NM_004369	Purification Method: Protein A purification
Concentration: 1 mg/ml	GeneID (NCBI): 1293	CloneNo.: 230540G6
Source: Rabbit	UNIPROT ID: P12111	
Isotype: IgG	Full Name: collagen, type VI, alpha 3	
Immunogen Catalog Number: AG34752	Calculated MW: 344 kDa	

Applications

Tested Applications:
Sandwich ELISA, Indirect ELISA, Sample test

Species Specificity:
human

Background Information

Storage

Storage:
Store at -80°C.
The product is shipped with ice packs. Upon receipt, store it immediately at -80°C

Storage Buffer:
PBS Only

For technical support and original validation data for this product please contact:

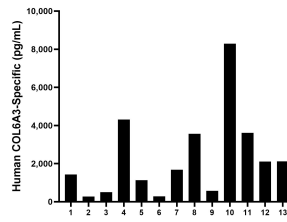
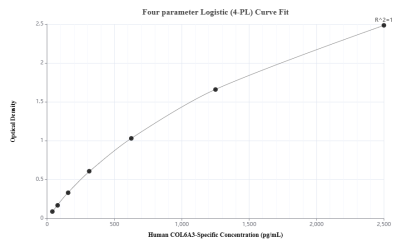
T: 4006900926

E: Proteintech-CN@ptglab.com

W: ptgcn.com

This product is exclusively available under Proteintech Group brand and is not available to purchase from any other manufacturer.

Selected Validation Data



Sandwich ELISA standard curve of MP00027-4, Human COL6A3-Specific Monoclonal Matched Antibody Pair - PBS only. 83010-4-PBS was coated to a plate as the capture antibody and incubated with serial dilutions of standard Ag34752. 83010-5-PBS was HRP conjugated as the detection antibody. Range: 39.06-2500 pg/mL.

Serum of thirteen individual healthy human donors were measured. The human COL6A3-Specific concentration of detected samples was determined to be 2,299.8 pg/mL with a range of 274.4 - 8,287.33 pg/mL.