

For Research Use Only

# Mouse CD68 Recombinant antibody, PBS Only (Capture)



Catalog Number:83014-6-PBS

## Basic Information

<b>Catalog Number:</b> 83014-6-PBS	<b>GenBank Accession Number:</b> NM_001291058.1	<b>Purification Method:</b> Protein A purification
<b>Size:</b> 1 mg/ml	<b>GeneID (NCBI):</b> 12514	<b>CloneNo.:</b> 230504H8
<b>Source:</b> Rabbit	<b>UNIPROT ID:</b> P31996-1	
<b>Isotype:</b> IgG	<b>Full Name:</b> CD68 antigen	
	<b>Calculated MW:</b> 35 kDa	

## Applications

**Tested Applications:**  
Sandwich ELISA, Indirect ELISA, Sample test

**Species Specificity:**  
mouse

## Background Information

### Storage

**Storage:**  
Store at -80°C.  
**The product is shipped with ice packs. Upon receipt, store it immediately at -80°C**

**Storage Buffer:**  
PBS Only

For technical support and original validation data for this product please contact:

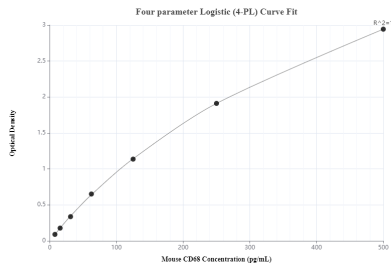
T: 4006900926

E: [Proteintech-CN@ptglab.com](mailto:Proteintech-CN@ptglab.com)

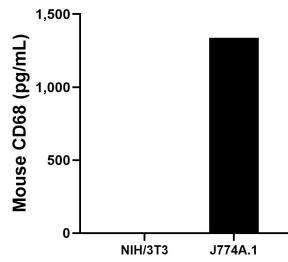
W: [ptgcn.com](http://ptgcn.com)

**This product is exclusively available under Proteintech Group brand and is not available to purchase from any other manufacturer.**

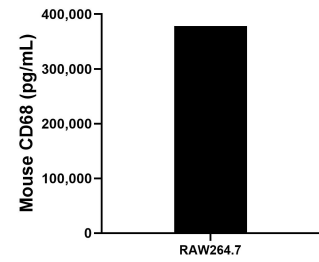
## Selected Validation Data



Sandwich ELISA standard curve of MP00015-4, Mouse CD68 Recombinant Matched Antibody Pair - PBS only. 83014-6-PBS was coated to a plate as the capture antibody and incubated with serial dilutions of standard Eg0787. 83014-6-PBS was HRP conjugated as the detection antibody. Range: 7.8-500 pg/mL



NIH/3T3 mouse embryo fibroblasts were cultured in DMEM supplemented with 10% fetal bovine serum, 2.5 mM L-glutamine, 100 U/mL penicillin and 100  $\mu$ g/mL streptomycin sulfate. An aliquot of the cell culture supernatant was removed, assayed for mouse CD68 and measured 3.5 pg/mL. J774A.1 mouse reticulum cell sarcoma macrophage cells were cultured in DMEM supplemented with 10% fetal bovine serum, 2.5 mM L-glutamine, 100 U/mL



The mouse CD68 concentration was determined to be 378,104.1 pg/mL in RAW264.7 cell extract based on a 4.2 mg/mL extract load.