

For Research Use Only

# PPP1R15B Recombinant antibody, PBS Only (Detector)

Catalog Number:83016-2-PBS



## Basic Information

Catalog Number:

83016-2-PBS

Size:

1 mg/ml

Source:

Rabbit

Isotype:

IgG

Immunogen Catalog Number:

AG6213

GenBank Accession Number:

BC065280

GeneID (NCBI):

84919

UNIPROT ID:

Q5SWA1

Full Name:

protein phosphatase 1, regulatory (inhibitor) subunit 15B

Calculated MW:

79 kDa

Purification Method:

Protein A purification

CloneNo.:

240052B11

## Applications

Tested Applications:

Cytometric bead array, Sandwich ELISA, Indirect ELISA, Sample test

Species Specificity:

human

## Background Information

### Storage

Storage:

Store at -80°C.

**The product is shipped with ice packs. Upon receipt, store it immediately at -80°C**

Storage Buffer:

100% PBS pH 7.3

For technical support and original validation data for this product please contact:

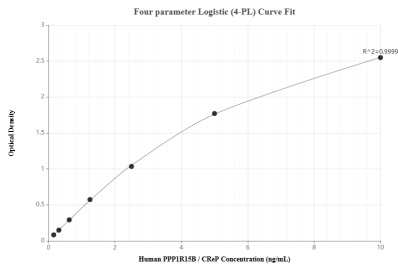
T: 4006900926

E: [Proteintech-CN@ptglab.com](mailto:Proteintech-CN@ptglab.com)

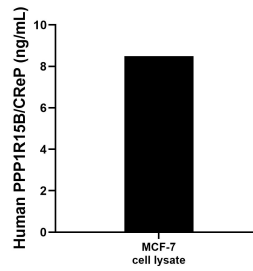
W: [ptgcn.com](http://ptgcn.com)

**This product is exclusively available under Proteintech Group brand and is not available to purchase from any other manufacturer.**

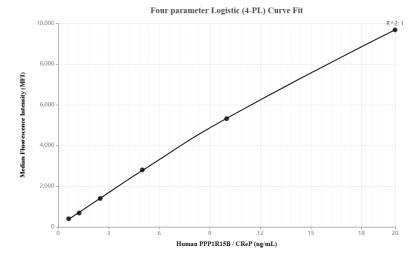
## Selected Validation Data



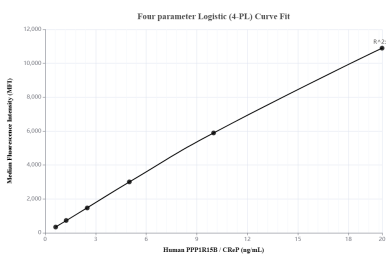
Sandwich ELISA standard curve of MP00002-2, Human PPP1R15B/CReP Recombinant Matched Antibody Pair - PBS only. 83016-3-PBS was coated to a plate as the capture antibody and incubated with serial dilutions of standard Ag6213. 83016-2-PBS was HRP conjugated as the detection antibody. Range: 0.156-10 ng/mL



MCF-7 cell lysate was measured. The human PPP1R15B/CReP concentration of detected samples was determined to be 8.50 ng/mL (based on a 4.3 mg/mL extract load) in MCF-7 cell lysate.



Cytometric bead array standard curve of MP00002-2, PPP1R15B/CReP Recombinant Matched Antibody Pair, PBS Only. Capture antibody: 83016-3-PBS. Detection antibody: 83016-2-PBS. Standard: Ag6213. Range: 0.625-20 ng/mL



Cytometric bead array standard curve of MP00002-3, PPP1R15B/CReP Recombinant Matched Antibody Pair, PBS Only. Capture antibody: 83016-5-PBS. Detection antibody: 83016-2-PBS. Standard: Ag6213. Range: 0.625-20 ng/mL