

For Research Use Only

# PPP1R15B Recombinant antibody, PBS Only (Capture)

Catalog Number:83016-3-PBS



## Basic Information

<b>Catalog Number:</b> 83016-3-PBS	<b>GenBank Accession Number:</b> BC065280	<b>Purification Method:</b> Protein A purification
<b>Size:</b> 1 mg/ml	<b>GeneID (NCBI):</b> 84919	<b>CloneNo.:</b> 240052G3
<b>Source:</b> Rabbit	<b>UNIPROT ID:</b> Q5SWA1	
<b>Isotype:</b> IgG	<b>Full Name:</b> protein phosphatase 1, regulatory (inhibitor) subunit 15B	
<b>Immunogen Catalog Number:</b> AG6213	<b>Calculated MW:</b> 79 kDa	

## Applications

**Tested Applications:**  
Cytometric bead array, Sandwich ELISA, Indirect ELISA, Sample test

**Species Specificity:**  
human

## Background Information

### Storage

**Storage:**  
Store at -80°C.  
**The product is shipped with ice packs. Upon receipt, store it immediately at -80°C**

**Storage Buffer:**  
100% PBS pH 7.3

For technical support and original validation data for this product please contact:

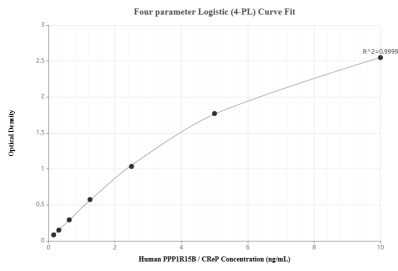
T: 4006900926

E: [Proteintech-CN@ptglab.com](mailto:Proteintech-CN@ptglab.com)

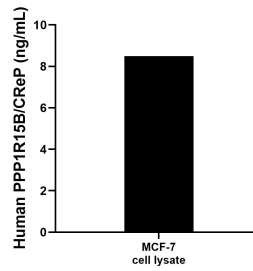
W: [ptgcn.com](http://ptgcn.com)

**This product is exclusively available under Proteintech Group brand and is not available to purchase from any other manufacturer.**

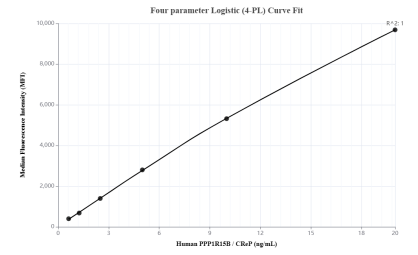
## Selected Validation Data



Sandwich ELISA standard curve of MP00002-2, Human PPP1R15B/CREP Recombinant Matched Antibody Pair - PBS only. 83016-3-PBS was coated to a plate as the capture antibody and incubated with serial dilutions of standard Ag6213. 83016-2-PBS was HRP conjugated as the detection antibody. Range: 0.156-10 ng/mL



MCF-7 cell lysate was measured. The human PPP1R15B/CREP concentration of detected samples was determined to be 8.50 ng/mL (based on a 4.3 mg/mL extract load) in MCF-7 cell lysate.



Cytometric bead array standard curve of MP00002-2, PPP1R15B/CREP Recombinant Matched Antibody Pair, PBS Only. Capture antibody: 83016-3-PBS. Detection antibody: 83016-2-PBS. Standard: Ag6213. Range: 0.625-20 ng/mL