

For Research Use Only

# PPP1R15B Recombinant antibody, PBS Only

Catalog Number: 83016-6-PBS

Featured Product



## Basic Information

<b>Catalog Number:</b> 83016-6-PBS	<b>GenBank Accession Number:</b> BC065280	<b>Purification Method:</b> Protein A purification
<b>Size:</b> 1 mg/ml	<b>GeneID (NCBI):</b> 84919	<b>CloneNo.:</b> 240052G5
<b>Source:</b> Rabbit	<b>UNIPROT ID:</b> Q5SWA1	
<b>Isotype:</b> IgG	<b>Full Name:</b> protein phosphatase 1, regulatory (inhibitor) subunit 15B	
<b>Immunogen Catalog Number:</b> AG6213	<b>Calculated MW:</b> 79 kDa	

## Applications

**Tested Applications:**  
WB, IF/ICC, FC (Intra), Indirect ELISA

**Species Specificity:**  
human

## Background Information

### Storage

**Storage:**  
Store at -80°C.  
**The product is shipped with ice packs. Upon receipt, store it immediately at -80°C**

**Storage Buffer:**  
PBS Only

For technical support and original validation data for this product please contact:

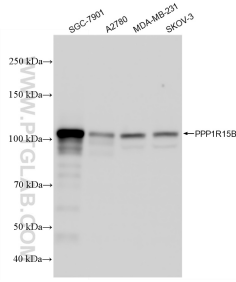
T: 4006900926

E: [Proteintech-CN@ptglab.com](mailto:Proteintech-CN@ptglab.com)

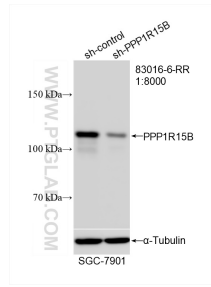
W: [ptgcn.com](http://ptgcn.com)

**This product is exclusively available under Proteintech Group brand and is not available to purchase from any other manufacturer.**

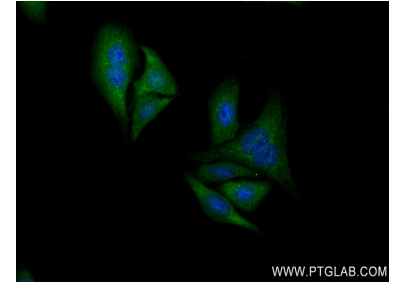
## Selected Validation Data



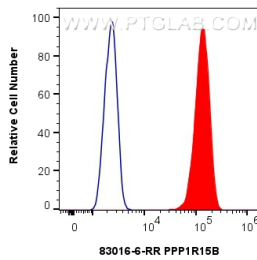
Various lysates were subjected to SDS PAGE followed by western blot with 83016-6-RR (PPP1R15B antibody) at dilution of 1:20000 incubated at room temperature for 1.5 hours. This data was developed using the same antibody clone with 83016-6-PBS in a different storage buffer formulation.



WB result of PPP1R15B antibody (83016-6-RR; 1:8000; incubated at room temperature for 1.5 hours) with sh-Control and sh-PPP1R15B transfected SGC-7901 cells. This data was developed using the same antibody clone with 83016-6-PBS in a different storage buffer formulation.



Immunofluorescent analysis of (-20°C Ethanol) fixed HepG2 cells using PPP1R15B antibody (83016-6-RR, Clone: 240052G5) at dilution of 1:250 and CoraLite®488-Conjugated AffiniPure Goat Anti-Rabbit IgG(H+L) (SA00013-2). This data was developed using the same antibody clone with 83016-6-PBS in a different storage buffer formulation.



1x10<sup>6</sup> U2OS cells were intracellularly stained with 0.25 ug PPP1R15B Recombinant antibody (83016-6-RR, Clone:240052G5) and CoraLite®488-Conjugated AffiniPure Goat Anti-Rabbit IgG(H+L) (SA00013-2)(red), or 0.25 ug Isotype Control (blue). Cells were fixed with 4% PFA and permeabilized with Flow Cytometry Perm Buffer (PF00011-C). This data was developed using the same antibody clone with 83016-6-PBS in a different storage buffer formulation.

