

For Research Use Only

BMPR1B Recombinant antibody, PBS Only (Detector)

Catalog Number:83029-8-PBS



Basic Information

Catalog Number: 83029-8-PBS	GenBank Accession Number: BC047773	Purification Method: Protein A purification
Size: 1 mg/ml	GeneID (NCBI): 658	CloneNo.: 230244A4
Source: Rabbit	UNIPROT ID: O00238	
Isotype: IgG	Full Name: bone morphogenetic protein receptor, type IB	
Immunogen Catalog Number: AG24902	Calculated MW: 57 kDa	

Applications

Tested Applications:
Sandwich ELISA, Indirect ELISA, Sample test

Species Specificity:
human

Background Information

Storage

Storage:
Store at -80°C.
The product is shipped with ice packs. Upon receipt, store it immediately at -80°C

Storage Buffer:
PBS Only

For technical support and original validation data for this product please contact:

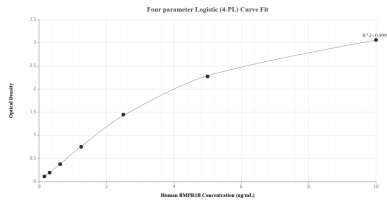
T: 4006900926

E: Proteintech-CN@ptglab.com

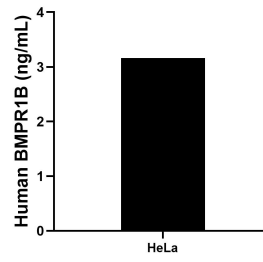
W: ptgcn.com

This product is exclusively available under Proteintech Group brand and is not available to purchase from any other manufacturer.

Selected Validation Data



Sandwich ELISA standard curve of MP00108-4, Human BMPR1B Recombinant Matched Antibody Pair - PBS only. 83029-4-PBS was coated to a plate as the capture antibody and incubated with serial dilutions of standard Ag24902. 83029-8-PBS was HRP conjugated as the detection antibody. Range: 0.156-10 ng/mL.



The mean BMPR1B concentration was determined to be 3.16 ng/mL in HeLa cell extract based on a 1.50 mg/mL extract load.