

For Research Use Only

ABCD1 Recombinant antibody, PBS Only



Catalog Number: 83038-4-PBS

Basic Information

Catalog Number: 83038-4-PBS	GenBank Accession Number: BC025358	Purification Method: Protein A purification
Size: 1mg/ml	GeneID (NCBI): 215	CloneNo.: 230226E12
Source: Rabbit	UNIPROT ID: P33897	
Isotype: IgG	Full Name: ATP-binding cassette, sub-family D (ALD), member 1	
Immunogen Catalog Number: AG0453	Calculated MW: 745 aa, 83 kDa	
	Observed MW: 75 kDa	

Applications

Tested Applications:
WB, IF, Indirect ELISA

Species Specificity:
Human, mouse

Background Information

ABCD1 (also known as ALDP) is a member of the ATP-binding cassette (ABC) transporter superfamily which functions as transporter for a wide variety of substrates. It localizes to the peroxisomal membrane. The exact function is not clear so far. Various mutations of ABCD1 cause X-linked adrenoleukodystrophy (X-ALD), an inherited neurodegenerative disease affecting the nervous system white matter and adrenal cortex.

Storage

Storage:
Store at -80°C.

Storage Buffer:
PBS Only

For technical support and original validation data for this product please contact:

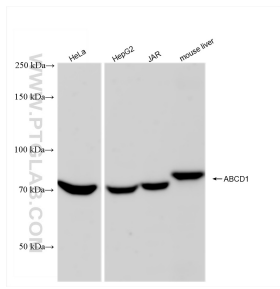
T: 4006900926

E: Proteintech-CN@ptglab.com

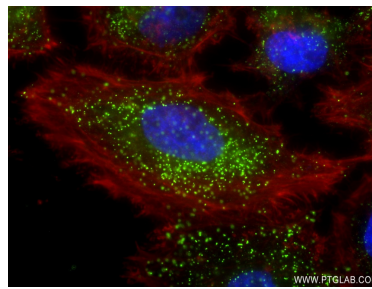
W: ptgcn.com

This product is exclusively available under Proteintech Group brand and is not available to purchase from any other manufacturer.

Selected Validation Data



Various lysates were subjected to SDS PAGE followed by western blot with 83038-4-RR (ABCD1 antibody) at dilution of 1:10000 incubated at room temperature for 1.5 hours. This data was developed using the same antibody clone with 83038-4-PBS in a different storage buffer formulation.



Immunofluorescent analysis of (4% PFA) fixed HeLa cells using ABCD1 antibody (83038-4-RR, Clone: 230226E12) at dilution of 1:200 and CoraLite®488-Conjugated AffiniPure Goat Anti-Rabbit IgG(H+L) (SA00013-2), CL594-Phalloidin (red). This data was developed using the same antibody clone with 83038-4-PBS in a different storage buffer formulation.