

For Research Use Only

# HIST1H2AE Recombinant antibody, PBS Only (Capture)



Catalog Number: 83041-1-PBS

## Basic Information

<b>Catalog Number:</b> 83041-1-PBS	<b>GenBank Accession Number:</b> BC093836	<b>Purification Method:</b> Protein A purification
<b>Size:</b> 1mg/ml	<b>GeneID (NCBI):</b> 3012	<b>CloneNo.:</b> 230349B1
<b>Source:</b> Rabbit	<b>UNIPROT ID:</b> P04908	
<b>Isotype:</b> IgG	<b>Full Name:</b> histone cluster 1, H2ae	
	<b>Calculated MW:</b> 14 kDa	

## Applications

**Tested Applications:**  
WB, IF, Dot Blot, Indirect ELISA, Cytometric bead array

**Species Specificity:**  
Human

## Background Information

### Storage

**Storage:**  
Store at -80°C.

**Storage Buffer:**  
100% PBS pH 7.3

For technical support and original validation data for this product please contact:

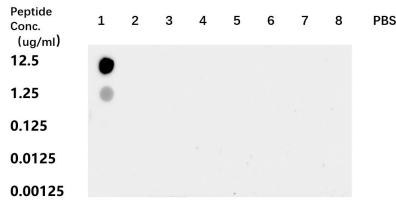
T: 4006900926

E: [Proteintech-CN@ptglab.com](mailto:Proteintech-CN@ptglab.com)

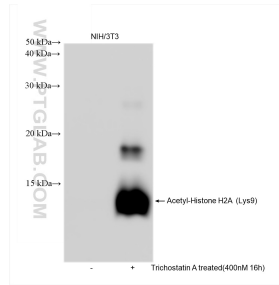
W: [ptgcn.com](http://ptgcn.com)

This product is exclusively available under Proteintech Group brand and is not available to purchase from any other manufacturer.

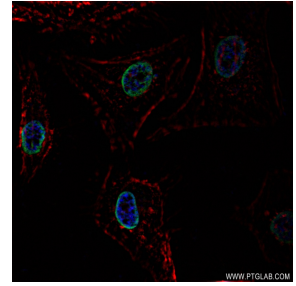
## Selected Validation Data



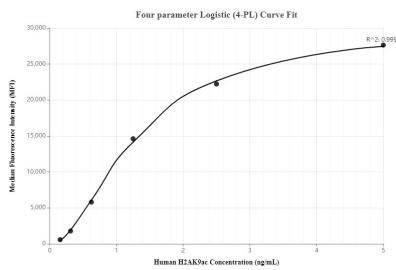
Dot blot analysis was used to confirm the specificity of Acetyl-Histone H2A (Lys9) antibody. Acetylated peptides were spotted onto NC and probed with antibody at 1 µg/ml. The amount of peptide (µg/ml) spotted is indicated next to each row. Column 1: H2AEK9Ac. Column 2: Unmodified H2AEK9. Column 3: H2AEK5Ac. Column 4: Unmodified H2AEK5. Column 5: H2AEK13Ac. Column 6: Unmodified H2AEK13. Column 7: H2AEK15Ac. Column 8: Unmodified H2AEK15. Column 9:



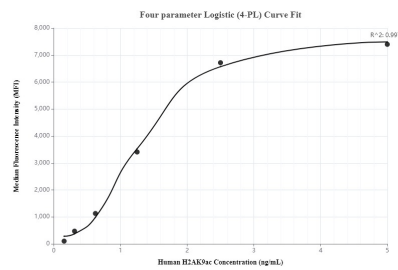
Trichostatin A treated NIH/3T3 cells were subjected to SDS PAGE followed by western blot with 83041-1-RR (Acetyl-Histone H2A (Lys9) antibody) at dilution of 1:5000 incubated at room temperature for 1.5 hours. This data was developed using the same antibody clone with 83041-1-PBS in a different storage buffer formulation.



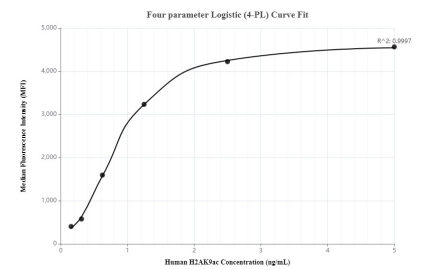
Immunofluorescent analysis of (4% PFA) fixed HeLa cells using Acetyl-Histone H2A (Lys9) antibody (83041-1-RR, Clone: 230349B1) at dilution of 1:150 and CoraLite®488-Conjugated AffiniPure Goat Anti-Rabbit IgG(H+L) (SA00013-2). This data was developed using the same antibody clone with 83041-1-PBS in a different storage buffer formulation.



Cytometric bead array standard curve of mFP00085-1, HIST1H2AE Recombinant Matched Antibody Pair, PBS Only. Capture antibody: 83041-1-PBS. Detection antibody: 83041-4-PBS. Standard: SY02140Ac. Range: 0.156-5 ng/mL



Cytometric bead array standard curve of mFP00085-2, HIST1H2AE Recombinant Matched Antibody Pair, PBS Only. Capture antibody: 83041-1-PBS. Detection antibody: 83041-3-PBS. Standard: SY02140Ac. Range: 0.156-5 ng/mL



Cytometric bead array standard curve of mFP00085-3, HIST1H2AE Recombinant Matched Antibody Pair, PBS Only. Capture antibody: 83041-1-PBS. Detection antibody: 83041-2-PBS. Standard: SY02140Ac. Range: 0.156-5 ng/mL