

For Research Use Only

MTA3 Recombinant antibody, PBS Only (Capture)



Catalog Number: 83042-3-PBS

Basic Information

Catalog Number: 83042-3-PBS	GenBank Accession Number: BC053631	Purification Method: Protein A purification
Size: 1mg/ml	GeneID (NCBI): 57504	CloneNo.: 230350D12
Source: Rabbit	UNIPROT ID: Q9BTC8	
Isotype: IgG	Full Name: metastasis associated 1 family, member 3	
Immunogen Catalog Number: AG6400	Calculated MW: 68 kDa	

Applications

Tested Applications:
WB, IF, Indirect ELISA, Cytometric bead array

Species Specificity:
Human

Background Information

Storage

Storage:
Store at -80°C.
The product is shipped with ice packs. Upon receipt, store it immediately at -80°C

Storage Buffer:
100% PBS pH 7.3

For technical support and original validation data for this product please contact:

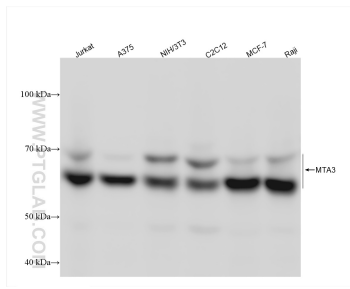
T: 4006900926

E: Proteintech-CN@ptglab.com

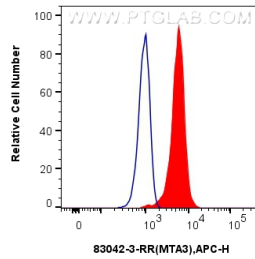
W: ptgcn.com

This product is exclusively available under Proteintech Group brand and is not available to purchase from any other manufacturer.

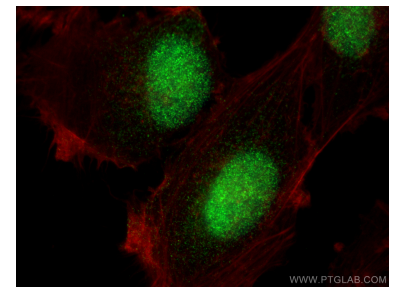
Selected Validation Data



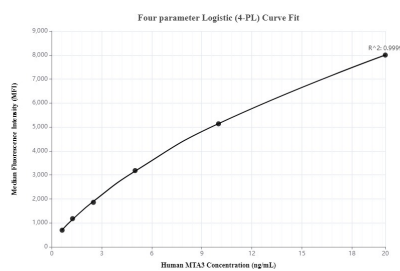
Various lysates were subjected to SDS PAGE followed by western blot with 83042-3-RR (MTA3 antibody) at dilution of 1:20000 incubated at room temperature for 1.5 hours. This data was developed using the same antibody clone with 83042-3-PBS in a different storage buffer formulation.



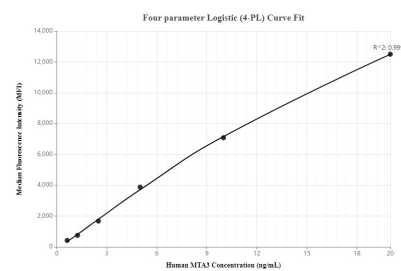
1×10^6 U-251 cells were intracellularly stained with 0.25 ug MTA3 Recombinant antibody (83042-3-RR, Clone:230350D12) and APC-Conjugated AffiniPure Goat Anti-Rabbit IgG(H+L)(red), or 0.25 ug Rabbit IgG control Rabbit PolyAb (30000-0-AP) (blue). Cells were fixed and permeabilized with True-Nuclear Transcription Factor Buffer Set. This data was developed using the same antibody clone with 83042-3-PBS in a different storage buffer formulation.



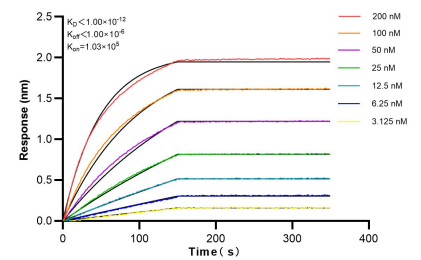
Immunofluorescent analysis of (4% PFA) fixed U-251 cells using MTA3 antibody (83042-3-RR, Clone: 230350D12) at dilution of 1:200 and Multi-rAb CoraLite® Plus 488-Goat Anti-Rabbit Recombinant Secondary Antibody (H+L) (RGAR002), CL594-Phalloidin (red). This data was developed using the same antibody clone with 83042-3-PBS in a different storage buffer formulation.



Cytometric bead array standard curve of mFP00017-2, MTA3 Recombinant Matched Antibody Pair, PBS Only. Capture antibody: 83042-3-PBS. Detection antibody: 83042-1-PBS. Standard: Ag6400. Range: 0.625-20 ng/mL



Cytometric bead array standard curve of mFP00017-3, MTA3 Recombinant Matched Antibody Pair, PBS Only. Capture antibody: 83042-3-PBS. Detection antibody: 83042-5-PBS. Standard: Ag6400. Range: 0.625-20 ng/mL



Bi-layer interferometry (BLI) kinetic assays of 83042-3-RR against Human MTA3 were performed. The affinity constant is below 1 pM.