

For Research Use Only

OATP1B1/SLCO1B1 Recombinant antibody, PBS Only (Capture)

Catalog Number:83054-6-PBS



Basic Information

| | | |
|---------------------------------------|--|---|
| Catalog Number: 83054-6-PBS | GenBank Accession Number: NM_006446 | Purification Method: Protein A purification |
| Size: 1 mg/ml | GeneID (NCBI): 10599 | CloneNo.: 230090B5 |
| Source: Rabbit | UNIPROT ID: Q9Y6L6 | |
| Isotype: IgG | Full Name: solute carrier organic anion transporter family, member 1B1 | |
| | Calculated MW: 76 kDa | |

Applications

Tested Applications:
Sandwich ELISA, Indirect ELISA, Sample test

Species Specificity:
human

Background Information

Storage

Storage:
Store at -80°C.
The product is shipped with ice packs. Upon receipt, store it immediately at -80°C

Storage Buffer:
PBS Only

For technical support and original validation data for this product please contact:

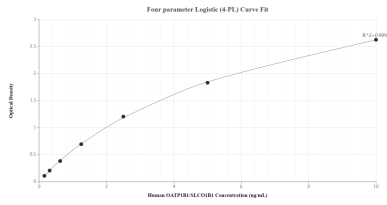
T: 4006900926

E: Proteintech-CN@ptglab.com

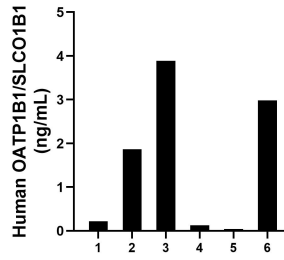
W: ptgcn.com

This product is exclusively available under Proteintech Group brand and is not available to purchase from any other manufacturer.

Selected Validation Data



Sandwich ELISA standard curve of MP00051-4, Human OATP1B1/SLCO1B1 Recombinant Matched Antibody Pair - PBS only. 83054-6-PBS was coated to a plate as the capture antibody and incubated with serial dilutions of standard 5Y00964. 83054-3-PBS was HRP conjugated as the detection antibody. Range: 0.156-10 ng/mL



Serum of six individual healthy human donors was measured. The OATP1B1/SLCO1B1 concentration of detected samples was determined to be 1.52 ng/mL with a range of 0.04-3.89 ng/mL.