

For Research Use Only

CD14 Recombinant antibody, PBS Only (Capture)



Catalog Number:83055-7-PBS

Basic Information

Catalog Number: 83055-7-PBS	GenBank Accession Number: BC010507	Purification Method: Protein A purification
Size: 1 mg/ml	GeneID (NCBI): 929	CloneNo.: 230332C5
Source: Rabbit	ENSEMBL Gene ID: ENSG00000170458	
Isotype: IgG	UNIPROT ID: P08571	
	Full Name: CD14 molecule	
	Calculated MW: 375 aa, 40 kDa	

Applications

Tested Applications:
Sandwich ELISA, Indirect ELISA, Sample test

Species Specificity:
human

Background Information

Storage

Storage:
Store at -80°C.
The product is shipped with ice packs. Upon receipt, store it immediately at -80°C

Storage Buffer:
PBS Only

For technical support and original validation data for this product please contact:

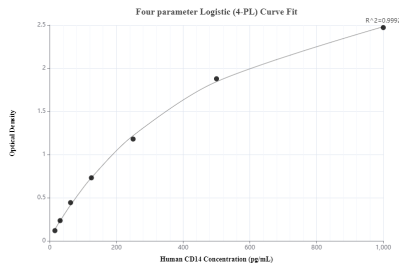
T: 4006900926

E: Proteintech-CN@ptglab.com

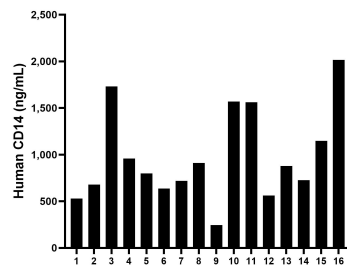
W: ptgcn.com

This product is exclusively available under Proteintech Group brand and is not available to purchase from any other manufacturer.

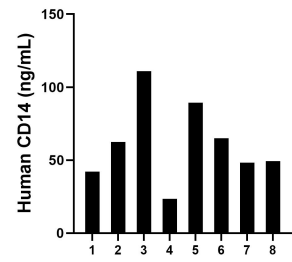
Selected Validation Data



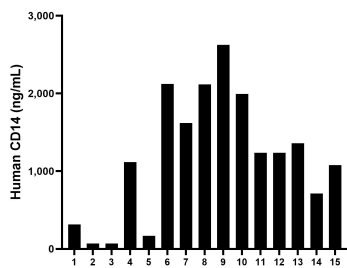
Sandwich ELISA standard curve of MP00058-4, CD14 Recombinant Matched Antibody Pair - PBS only. 83055-7-PBS was coated to a plate as the capture antibody and incubated with serial dilutions of standard Eg0498. 83055-1-PBS was HRP conjugated as the detection antibody. Range: 15.6-1000 pg/mL



Plasma of sixteen individual healthy human donors was measured. The CD14 concentration of detected samples was determined to be 979.3 ng/mL with a range of 246.0 - 2015.1 ng/mL.



Saliva of eight individual healthy human donors was measured. The CD14 concentration of detected samples was determined to be 61.4 ng/mL with a range of 23.6 - 110.8 ng/mL.



Serum of fifteen individual healthy human donors was measured. The CD14 concentration of detected samples was determined to be 1189.4 ng/mL with a range of 69.0 - 2626.1 ng/mL.