

For Research Use Only

# EPOR Recombinant antibody, PBS Only (Capture)



Catalog Number: 83056-4-PBS

## Basic Information

<b>Catalog Number:</b> 83056-4-PBS	<b>GenBank Accession Number:</b> NM_000121.4	<b>Purification Method:</b> Protein A purification
<b>Size:</b> 1mg/ml	<b>GeneID (NCBI):</b> 2057	<b>CloneNo.:</b> 230117G3
<b>Source:</b> Rabbit	<b>UNIPROT ID:</b> P19235	
<b>Isotype:</b> IgG	<b>Full Name:</b> erythropoietin receptor	
<b>Immunogen Catalog Number:</b> AG33956	<b>Calculated MW:</b> 55 kDa	

## Applications

**Tested Applications:**  
IF, Sandwich ELISA, Indirect ELISA

**Species Specificity:**  
Human

## Background Information

### Storage

**Storage:**  
Store at -80°C.  
**The product is shipped with ice packs. Upon receipt, store it immediately at -80°C**

**Storage Buffer:**  
100% PBS pH 7.3

For technical support and original validation data for this product please contact:

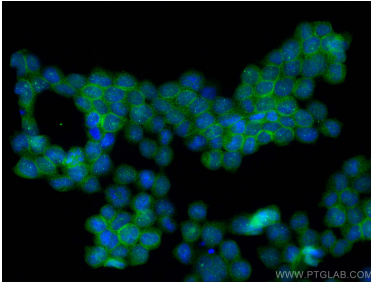
T: 4006900926

E: [Proteintech-CN@ptglab.com](mailto:Proteintech-CN@ptglab.com)

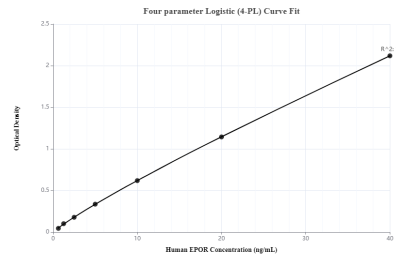
W: [ptgcn.com](http://ptgcn.com)

**This product is exclusively available under Proteintech Group brand and is not available to purchase from any other manufacturer.**

## Selected Validation Data



Immunofluorescent analysis of (4% PFA) fixed TF-1 cells using EPOR antibody (83056-4-RR, Clone: 230117G3 ) at dilution of 1:1000 and CoraLite®488-Conjugated AffiniPure Goat Anti-Rabbit IgG(H+L) (SA00013-2). This data was developed using the same antibody clone with 83056-4-PBS in a different storage buffer formulation.



Sandwich ELISA standard curve of MP00065-1, EPOR Recombinant Matched Antibody Pair, PBS Only. Capture antibody: 83056-4-PBS. Detection antibody: 83056-3-PBS. Standard: Ag33956. Range: 0.625-40 ng/mL