

For Research Use Only

GABRA2 Recombinant antibody, PBS Only (Capture/Detector)



Catalog Number:83057-2-PBS

Basic Information

Catalog Number: 83057-2-PBS	GenBank Accession Number: NM_000807	Purification Method: Protein A purification
Size: 1mg/ml	GeneID (NCBI): 2555	CloneNo.: 230158E6
Source: Rabbit	UNIPROT ID: P47869	
Isotype: IgG	Full Name: gamma-aminobutyric acid (GABA) A receptor, alpha 2	
Immunogen Catalog Number: AG29301	Calculated MW: 51 kDa	

Applications

Tested Applications:
Cytometric bead array, Indirect ELISA, WB

Species Specificity:
rat, mouse, human

Background Information

Storage

Storage:
Store at -80°C.
The product is shipped with ice packs. Upon receipt, store it immediately at -80°C
Storage Buffer:
100% PBS pH 7.3

For technical support and original validation data for this product please contact:

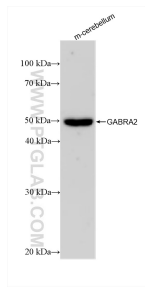
T: 4006900926

E: Proteintech-CN@ptglab.com

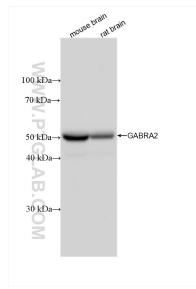
W: ptgcn.com

This product is exclusively available under Proteintech Group brand and is not available to purchase from any other manufacturer.

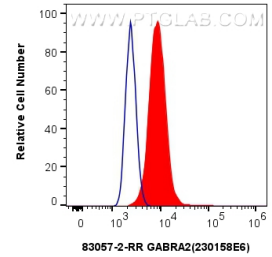
Selected Validation Data



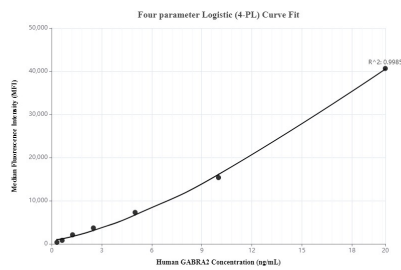
mouse cerebellum tissue was subjected to SDS PAGE followed by western blot with 83057-2-RR (GABRA2 antibody) at dilution of 1:5000 incubated at room temperature for 1.5 hours. This data was developed using the same antibody clone with 83057-2-PBS in a different storage buffer formulation.



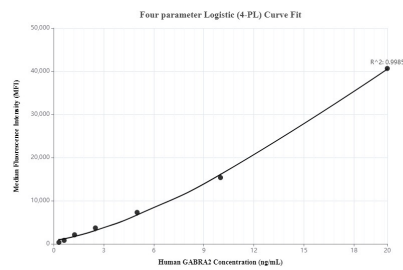
Various lysates were subjected to SDS PAGE followed by western blot with 83057-2-RR (GABRA2 antibody) at dilution of 1:5000 incubated at room temperature for 1.5 hours. This data was developed using the same antibody clone with 83057-2-PBS in a different storage buffer formulation.



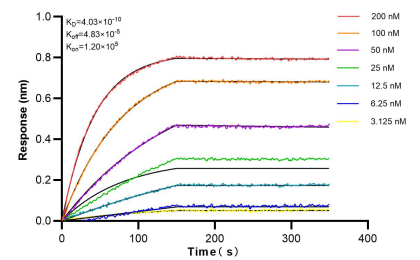
1×10^6 HeLa cells were intracellularly stained with 0.25 μ g GABRA2 Recombinant antibody (83057-2-RR, Clone:230158E6) and CoraLite@488-Conjugated AffiniPure Goat Anti-Rabbit IgG(H+L) (SA00013-2)(red), or 0.25 μ g Isotype Control (blue). Cells were fixed with 4% PFA and permeabilized with Flow Cytometry Perm Buffer (PF00011-C). This data was developed using the same antibody clone with 83057-2-PBS in a different storage buffer formulation.



Cytometric bead array standard curve of mP00067-2, GABRA2 Recombinant Matched Antibody Pair, PBS Only. Capture antibody: 83057-3-PBS. Detection antibody: 83057-2-PBS. Standard: Ag29301. Range: 0.312-20 ng/mL.



Cytometric bead array standard curve of mP00067-3, GABRA2 Recombinant Matched Antibody Pair, PBS Only. Capture antibody: 83057-2-PBS. Detection antibody: 83057-4-PBS. Standard: Ag29301. Range: 0.312-20 ng/mL.



Bi-layer interferometry (BLI) kinetic assays of 83057-2-RR against Human GABRA2 were performed. The affinity constant is 0.403 nM.