

For Research Use Only

# Cytokeratin 13 Recombinant antibody, PBS Only (Detector)

Catalog Number:83058-5-PBS



## Basic Information

|                                     |                                       |  |
|-------------------------------------|---------------------------------------|--|
| Catalog Number:<br>83058-5-PBS      | GenBank Accession Number:<br>BC002661 | Purification Method:<br>Protein A purification |
| Size:<br>1 mg/ml                    | GeneID (NCBI):<br>3860                | CloneNo.:<br>230366C3                          |
| Source:<br>Rabbit                   | UNIPROT ID:<br>P13646                 |  |
| Isotype:<br>IgG                     | Full Name:<br>keratin 13              |  |
| Immunogen Catalog Number:<br>AG0217 | Calculated MW:<br>50 kDa              |  |

## Applications

**Tested Applications:**  
Sandwich ELISA, Indirect ELISA, Sample test

**Species Specificity:**  
human

## Background Information

### Storage

**Storage:**  
Store at -80°C.  
**The product is shipped with ice packs. Upon receipt, store it immediately at -80°C**

**Storage Buffer:**  
PBS Only

For technical support and original validation data for this product please contact:

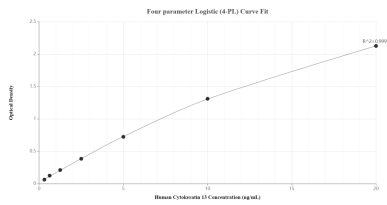
T: 4006900926

E: Proteintech-CN@ptglab.com

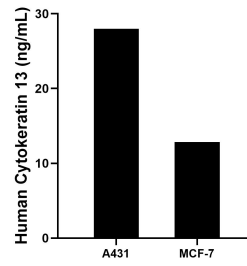
W: ptgcn.com

**This product is exclusively available under Proteintech Group brand and is not available to purchase from any other manufacturer.**

## Selected Validation Data



Sandwich ELISA standard curve of MP00074-2, Human Cytokeratin 13 Recombinant Matched Antibody Pair - PBS only. 83058-1-PBS was coated to a plate as the capture antibody and incubated with serial dilutions of standard Ag0217. 83058-5-PBS was HRP conjugated as the detection antibody. Range: 0.313-20 ng/mL



The mean Cytokeratin 13 concentration was determined to be 28.00 ng/mL in A431 cell extract based on a 1.50 mg/mL extract load and 12.84 ng/mL in MCF-7 cell extract based on a 1.20 mg/mL extract load.