

For Research Use Only

# TRPS1 Recombinant antibody, PBS Only (Capture/Detector)

Catalog Number: 83062-1-PBS



## Basic Information

<b>Catalog Number:</b> 83062-1-PBS	<b>GenBank Accession Number:</b> BC125020	<b>Purification Method:</b> Protein A purification
<b>Size:</b> 1mg/ml	<b>GeneID (NCBI):</b> 7227	<b>CloneNo.:</b> 230051F11
<b>Source:</b> Rabbit	<b>UNIPROT ID:</b> Q9UHF7	<b>Affinity:</b> $K_D = 5.92 \times 10^{-10}$
<b>Isotype:</b> IgG	<b>Full Name:</b> trichorhinophalangeal syndrome I	$K_{off} = 1.98 \times 10^{-4}$
<b>Immunogen Catalog Number:</b> AG33959	<b>Calculated MW:</b> 1294 aa, 143 kDa	$K_{on} = 3.35 \times 10^5$

## Applications

**Tested Applications:**  
Cytometric bead array, Sandwich ELISA, Indirect ELISA,  
Sample test

**Species Specificity:**  
human

## Background Information

### Storage

**Storage:**  
Store at -80°C.  
**The product is shipped with ice packs. Upon receipt, store it immediately at -80°C**

**Storage Buffer:**  
100% PBS pH 7.3

For technical support and original validation data for this product please contact:

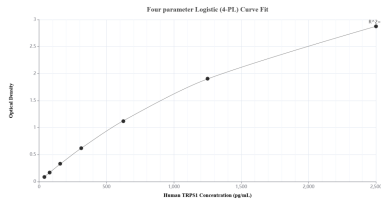
T: 4006900926

E: [Proteintech-CN@ptglab.com](mailto:Proteintech-CN@ptglab.com)

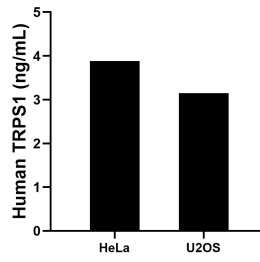
W: [ptgcn.com](http://ptgcn.com)

**This product is exclusively available under Proteintech Group brand and is not available to purchase from any other manufacturer.**

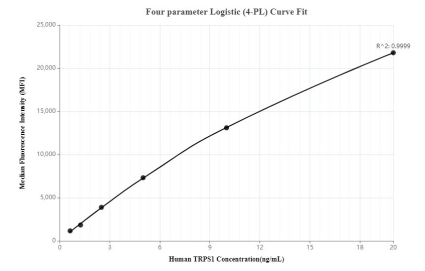
## Selected Validation Data



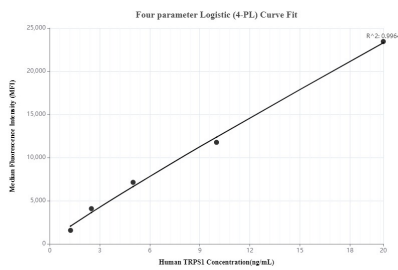
Sandwich ELISA standard curve of MP00096-1, Human TRPS1 Recombinant Matched Antibody Pair - PBS only. 83062-1-PBS was coated to a plate as the capture antibody and incubated with serial dilutions of standard Ag33959. 83062-3-PBS was HRP conjugated as the detection antibody. Range: 39.1-2500 pg/mL



The mean TRPS1 concentration was determined to be 3.9 ng/mL in HeLa cell extract based on a 1.0 mg/mL extract load and 3.2 ng/mL in U2OS cell extract based on a 3.5 mg/mL extract load.



Cytometric bead array standard curve of MP00096-1, TRPS1 Recombinant Matched Antibody Pair - PBS only. Capture antibody: 83062-1-PBS. Detection antibody: 83062-3-PBS. Standard: Ag33959. Range: 0.625-20 ng/mL



Cytometric bead array standard curve of MP00096-2, TRPS1 Recombinant Matched Antibody Pair - PBS only. Capture antibody: 83062-2-PBS. Detection antibody: 83062-1-PBS. Standard: Ag33959. Range: 1.25-20 ng/mL