

For Research Use Only

TRPS1 Recombinant antibody, PBS Only (Detector)

Catalog Number: 83062-3-PBS



Basic Information

Catalog Number: 83062-3-PBS	GenBank Accession Number: BC125020	Purification Method: Protein A purification
Size: 1mg/ml	GeneID (NCBI): 7227	CloneNo.: 230051G2
Source: Rabbit	UNIPROT ID: Q9UHF7	Affinity: $K_D = 2.32 \times 10^{-10}$
Isotype: IgG	Full Name: trichorhinophalangeal syndrome I	$K_{off} = 3.42 \times 10^{-5}$
Immunogen Catalog Number: AG33959	Calculated MW: 1294 aa, 143 kDa	$K_{on} = 1.48 \times 10^5$

Applications

Tested Applications:
Cytometric bead array, Sandwich ELISA, Indirect ELISA,
Sample test

Species Specificity:
human

Background Information

Storage

Storage:
Store at -80°C.
The product is shipped with ice packs. Upon receipt, store it immediately at -80°C
Storage Buffer:
100% PBS pH 7.3

For technical support and original validation data for this product please contact:

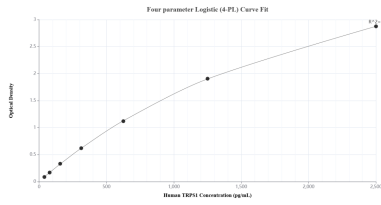
T: 4006900926

E: Proteintech-CN@ptglab.com

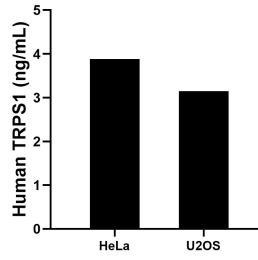
W: ptgcn.com

This product is exclusively available under Proteintech Group brand and is not available to purchase from any other manufacturer.

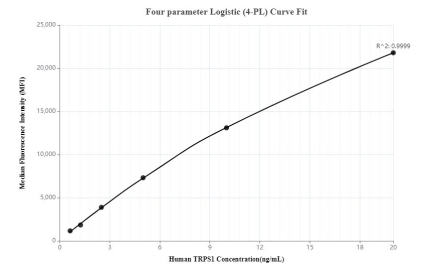
Selected Validation Data



Sandwich ELISA standard curve of MP00096-1, Human TRPS1 Recombinant Matched Antibody Pair - PBS only. 83062-1-PBS was coated to a plate as the capture antibody and incubated with serial dilutions of standard Ag33959. 83062-3-PBS was HRP conjugated as the detection antibody. Range: 39.1-2500 pg/mL



The mean TRPS1 concentration was determined to be 3.9 ng/mL in HeLa cell extract based on a 1.0 mg/mL extract load and 3.2 ng/mL in U2OS cell extract based on a 3.5 mg/mL extract load.



Cytometric bead array standard curve of MP00096-1, TRPS1 Recombinant Matched Antibody Pair - PBS only. Capture antibody: 83062-1-PBS. Detection antibody: 83062-3-PBS. Standard: Ag33959. Range: 0.625-20 ng/mL